

DE-17-000744/00 pos. 1

Worm Gear reducer - catalogue A04

Application given data

N.A.

Designation: R V 50 UO3D/25 V5
Mounting position V5, $n_1 = 2800$ [min⁻¹]

Standard product : Yes

Accessories and special designs

Viton seal rings on high speed shaft (TV1)

Reducer/Gearmotor specifications

Transmission ratio i		25
Output speed n_2	[min ⁻¹]	112
Input speed n_1	[min ⁻¹]	2800
Input power P_1	[kW]	N.A.
Output torque M_2	[N m]	N.A.
Service factor f_s		N.A.
Efficiency		0,82
Mass of gear reducer (without motor)	[kg]	9
Previsional lubricant quantity	[l]	0,4
ISO viscosity grade	[cSt]	320

Top view with M.P. B3



Nominal Data

Nominal input power P_{N1}	[kW]	1,43
Nominal output power P_{N2}	[kW]	1,17
Nominal output torque M_{N2}	[N m]	100
Maximum output torque M_{2max}	[N m]	175

Verifications

Safety factor on M_{2peak}	N.A.
Thermal power verification	N.A.
External loads verification	N.A.

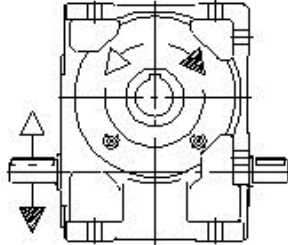
N.A: Not Applied

The results of calculations in this document have no validity in terms of warranty. Computing: a) are theoretical, b) are based on the assumptions for optimal working conditions specified on Rossi catalogues, c) they rely on the truthfulness of given input data for which the customer is the only responsible, d) any omitted data or not taken into account by the customer voids the entire report. All contents, and information in this document are sole property of Rossi S.p.A. It cannot be disclosed for purposes other than the scope for which it has been generated under the agreement between the Customer and an authorized Rossi representative. It cannot be reproduced (in whole or in part) without explicit written permission by Rossi S.p.A. legal representative, and in this case the intellectual property of the document remains solely of Rossi S.p.A.

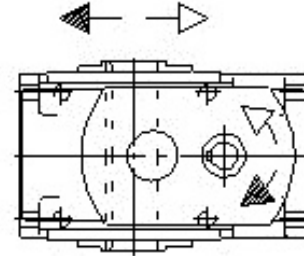
DE-17-000744/00 pos. 1

Worm Gear reducer - catalogue A04

Design: UO3D






Mounting position: V5



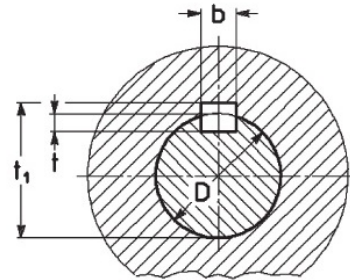
Plugs position

Senza tappo di livello
Fornito completo di olio

Without oil level plug
Supplied filled with oil

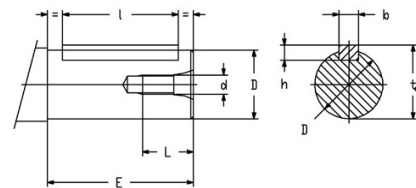
-  = filler plug (in view/not in view)
-  = level plug (in view/not in view)
-  = filler plug (in view/not in view)

Standard hollow low speed shaft



D	b x h x l	b	t	t ₁
ø28 H7	8 x 7 x 63	8	4	31,2

High speed shaft: ø19j6



D	E	d	b x h x l	L	t ₀
ø11 j6	23 (20)	M5	4x4x18 (12)	13	12,5
ø14 j6	30 (25)	M6	5x5x25 (16)	16	16
ø16 j6	30	M6	5x5x25	16	18
ø19 j6	40 (30)	M6	6x6x36 (25)	16	21,5