

Vari-Tork® slip friction clutch



VT27 VT40

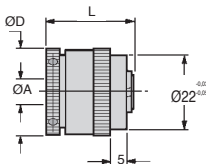
Torque up to 1.32Nm

- **Basic clutch to be insert into a hub**
- Protects equipment in case of excess torque
- Max. backlash 2°
- Max. sliding velocity: 1000 rpm
- The housing t° should be maintained below 80°C
- Power dissipation at 20°C :
 - 2 discs : 7 watts
 - 6 discs : 8.6 watts
- Materials:
 - Hubs + discs: treated steel
 - Casing + adjuster ring: aluminium

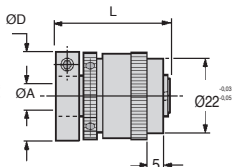


Advantages

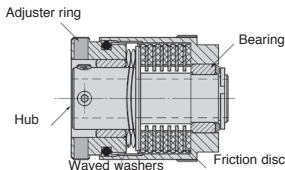
- Clutches interrupt rotation when load being transmitted exceeds preset limit.



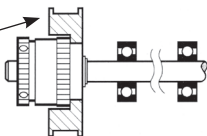
VT2 With set screw



VT4 With clamp fixing



Pulley (Or gear, etc...) bonded to register. Press fits not permissible.



DISCOUNTS

Qty.	1+	5+	10+	15+	20+	25+
Disc.	List	-15%	-20%	-25%	-30%	On request

Part number	ØA ^{+0.03} Std.	N° of friction discs	ØD	L	Screw	Heat dissipation at 20°C (Watts)	Max. frictional torque (Nm)	Moment of inertia (kg·m ² × 10 ⁴)	Price each 1 to 4
With set screw									
VT2712-6	6	2	25,8	26,4	M3	7,0	0,53	242	✓ 65,60 €
VT2712-8	8	2	25,8	26,4	M3	7,0	0,53	242	✓ 65,60 €
VT2796-6	6	6	25,8	32,4	M3	8,6	1,32	312	✓ 77,75 €
VT2796-8	8	6	25,8	32,4	M3	8,6	1,32	312	✓ 77,75 €
With locking jaw									
VT4012-6	6	2	25,8	34,4	M3	7,0	0,53	317	✓ 73,97 €
VT4012-8	8	2	25,8	34,4	M3	7,0	0,53	317	- 73,97 €
VT4096-6	6	6	25,8	40,7	M3	8,6	1,32	381	✓ 85,04 €
VT4096-8	8	6	25,8	40,7	M3	8,6	1,32	381	✓ 85,04 €

*Depending on availability - Dimensions in mm