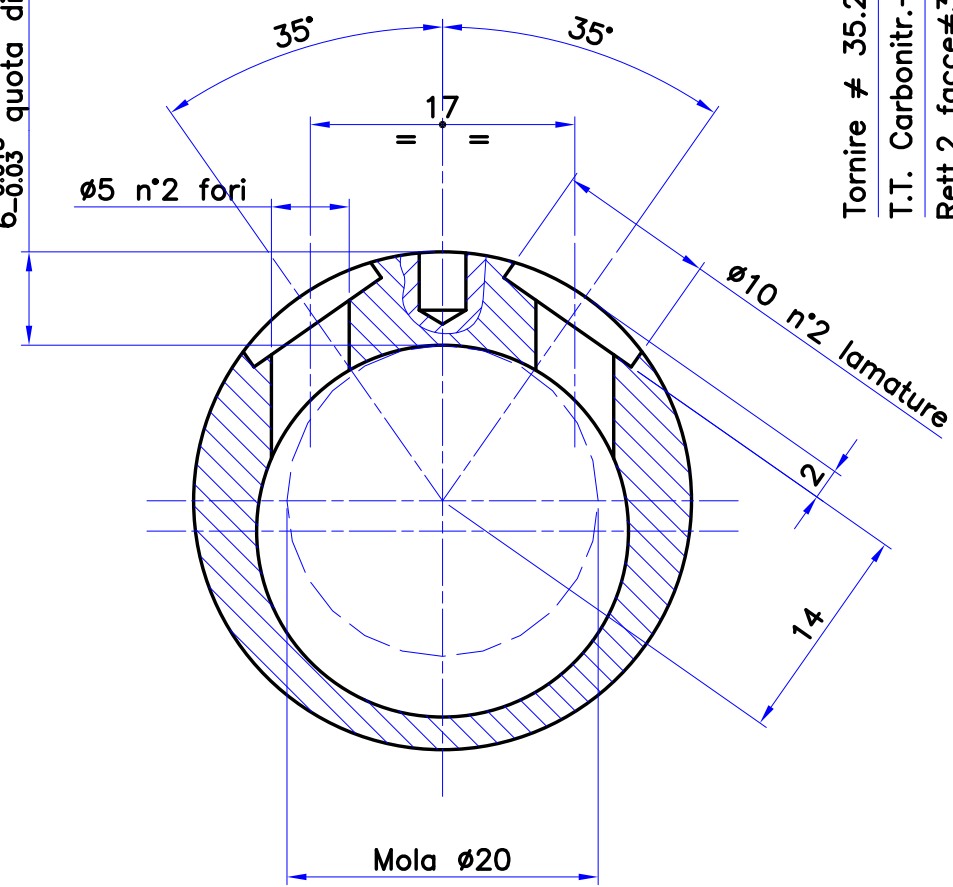


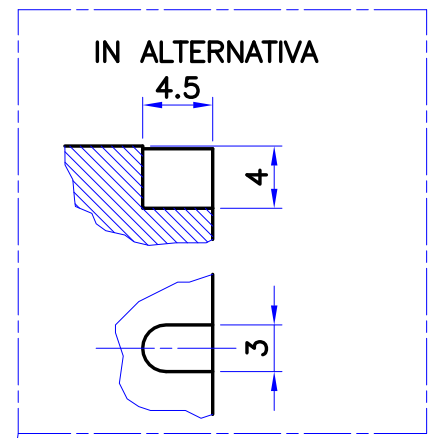
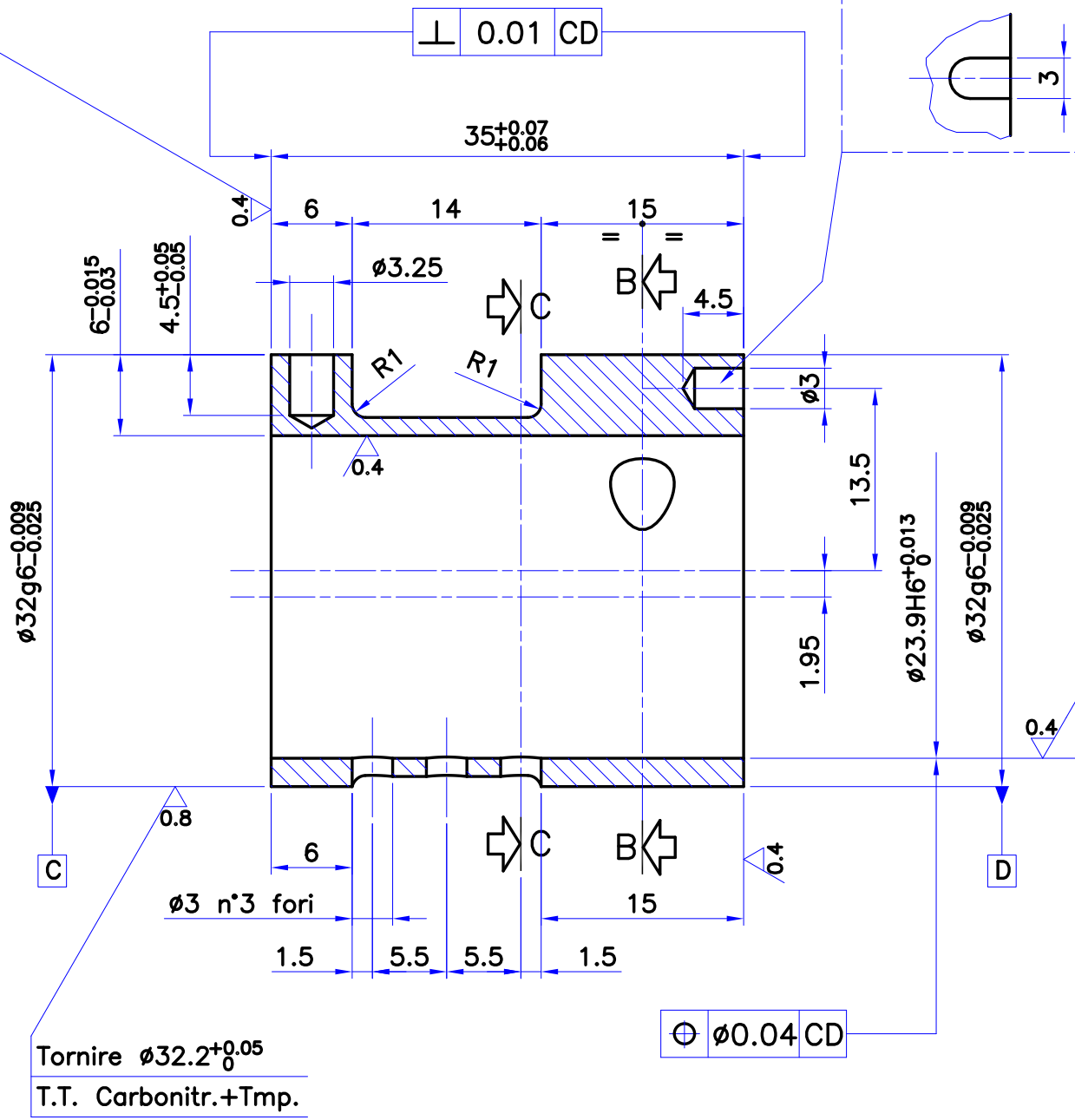
6<sup>-0.015</sup><sub>-0.03</sub> quota di controllo

Sez. B-B



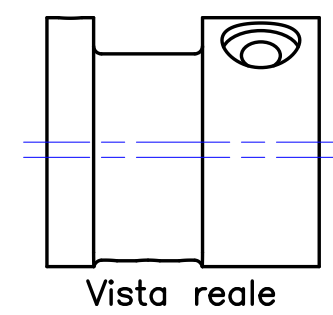
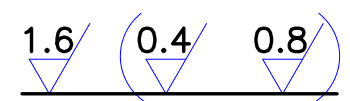
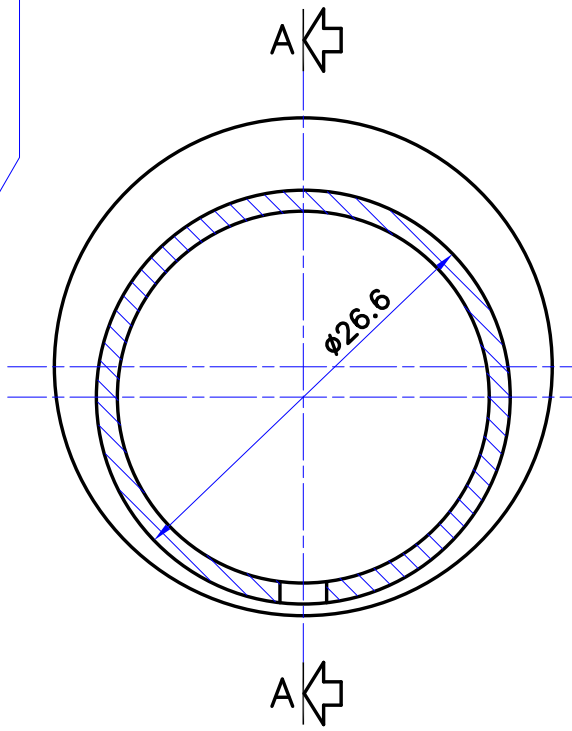
Tornire  $\varnothing 35.2^{+0.1}$   
T.T. Carbonitr.+Tmp.  
Rett.2 facce  $\varnothing 35^{+0.07}$   
 $\pm 0.06$

Sez. A-A

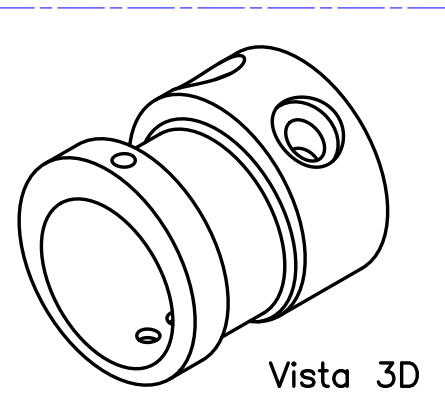


Tornire  $\varnothing 23.8^{+0.05}$   
Carbonitr.+Tmp.  
Rett.  $\varnothing 23.9H6^{+0.013}$   
Segue rett.  $\varnothing 32g6^{+0.009}$   
 $-0.025$

Sez. C-C



ATTENZIONE: Per quote in tolleranza seguire indicazioni a disegno  
Sm.0.2x45° sul  $\varnothing 32g6$  (05x45° di tornio)  
Spigoli vivi sul  $\varnothing 23.9H9$



<b>MATERIALE/STATO</b> 35SMnPb10 (PR80) 1 19 03 33 Traf. Ø33 TRATTAMENTO Carbonit.prof. 0.3-0.4+Tmp. HRA 81-83 (HRC 59-62)	<b>QUOTE SENZA INDICAZIONE DI TOLLERANZA</b> GRADO DI PRECISO UNI 5307-63 FORI TOLL. +/- ALBERI TOLL.-						
	DIMENS. oltre	6	30	120	315	DIMENSIONI ANGOLARI	
	fino a	6	30	120	315	1000	±1°
	dimens.lineari	±0,050	±0,100	±0,150	±0,200	±0,300	
	fori $\frac{\varnothing}{\varnothing}$ / alberi $\frac{\varnothing}{\varnothing}$	0,100	0,200	0,300	0,400	0,600	
ATZ AR2144-AT2144/1/22-AFMF2144/5 AF2144/24-AR1603/3/4/9-ATMF2144/23 MF2144/25	DATA 30/09/05	DISEGNAT. E.R.	FAMIGLIE 874				
DENOMINAZIONE STATORE	Q.TA'UNIT. 1	SCALA 2:1					
MACCHINA ERGOVIT 22-33-55-77	DIS. 5 02 00 79		G:\ARCHIVIO\502\5020079.dwg				

