



## MR 441-11Y-T

- Actuator can be repositioned by 90°
- Metal enclosure
- 2 Contacts
- 106 mm x 99 mm x 63 mm (basic component)
- Protection class IP65

## Data

### Ordering data

Product type description	MR 441-11Y-T
Article number (order number)	101058760
EAN (European Article Number)	4030661033631
eCl@ss number, version 12.0	27-27-06-01
eCl@ss number, version 11.0	27-27-06-01
eCl@ss number, version 9.0	27-27-06-01
ETIM number, version 7.0	EC000030
ETIM number, version 6.0	EC000030

### Approvals - Standards

Certificates	DNV CCC EAC
--------------	-------------------

### General data

Standards	EN IEC 60947-5-1
Working principle	mechanical
Slide form	Castor

Enclosure material	Grey cast iron, galvanised
Enclosure coating material	painted
Material of the contacts, electrical	Silver
Gross weight	1,310 g

### General data - Features

Number of normally closed (NC)	1
Number of normally open (NO)	1

### Safety classification - Safety outputs

B <sub>10D</sub> Normally-closed contact (NC)	2,000,000 Operations
---	----------------------

### Mechanical data

Actuating element	Roller plunger
Roller material	Brass
Mechanical life, minimum	5,000,000 Operations
Actuating angle, from left of switch axis	30 °
Actuating angle, from right of switch axis	30 °
Contact opening	2 x 2.5 mm
Actuating speed, minimum	1 mm/min
Actuating speed, maximum	0.5 m/s
Note (Actuating speed)	Actuating speed with vertical actuating angle to switch axis

### Mechanical data - Connection technique

Termination	Screw terminals M20 x 1.5
Cable section, minimum	1.5 mm <sup>2</sup>
Cable section, maximum	2.5 mm <sup>2</sup>
Note (Cable section)	All indications including the conductor ferrules.
Wire cross-section	13 AWG

## Mechanical data - Dimensions

Length of sensor	63 mm
Width of sensor	106 mm
Height of sensor	145 mm
Width of Castor	6.5 mm
Diameter of Castor	25 mm

## Ambient conditions

Degree of protection	IP65
Ambient temperature, minimum	-40 °C
Ambient temperature, maximum	+200 °C

## Ambient conditions - Insulation values

Rated insulation voltage $U_i$	250 V
Rated impulse withstand voltage $U_{imp}$	4 kV

## Electrical data

Thermal test current	16 A
Utilisation category AC-15	250 VAC
Utilisation category AC-15	4 A
Switching element	NO contact, NC contact
Note (Switching element)	galvanically separated contact bridges
Switching principle	Snap action
Bounce duration, maximum	5 ms
Switchover time, maximum	35 ms

## Ordering code

Product type description:  
(1)(2) 441-11Y(3)-(4)-(5)

(1)	
<b>T</b>	Slow action (not for AF/S)
<b>M</b>	Snap action
(2)	
<b>S</b>	Plunger S
<b>2S</b>	Telescopic plunger 2S
<b>R</b>	Roller plunger R
<b>K</b>	Offset roller lever K
<b>J</b>	Offset roller lever J
<b>2C</b>	Fork lever 2C
<b>L</b>	Roller lever L
<b>D</b>	Roller lever D
<b>MAF/S</b>	Level switch AF/S
(3)	
<b>UE</b>	Slow action with overlapping contacts
(4)	
<b>without</b>	Cast iron enclosure
<b>A</b>	Aluminium enclosure
(5)	
<b>T</b>	temperature-resistant and tropical version with ceramic insulation for -40 °C ... +200 °C
<b>1276-2</b>	Gold-plated contacts

## Pictures

**Product picture (catalogue individual photo)**

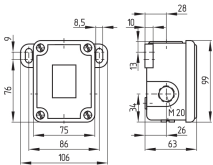


ID: kt441f04

| 549.9 kB | .jpg | 234.597 x 334.433 mm - 665 x 948 px - 72 dpi

| 68.3 kB | .png | 74.083 x 105.481 mm - 210 x 299 px - 72 dpi

## Dimensional drawing basic component



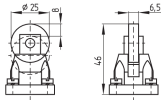
ID: 1t441g01

| 29.6 kB | .cdr |

| 3.9 kB | .png | 74.083 x 51.858 mm - 210 x 147 px - 72 dpi

| 86.4 kB | .jpg | 352.778 x 247.297 mm - 1000 x 701 px - 72 dpi

## Dimensional drawing actuator



ID: 1t422b03

| 3.0 kB | .png | 74.083 x 51.858 mm - 210 x 147 px - 72 dpi

| 55.3 kB | .jpg | 352.778 x 247.297 mm - 1000 x 701 px - 72 dpi

## Operating principle



ID: 235rz01

| 15.2 kB | .cdr |

| 149.7 kB | .jpg | 352.778 x 799.394 mm - 1000 x 2266 px - 72 dpi

| 2.9 kB | .png | 74.083 x 167.922 mm - 210 x 476 px - 72 dpi

Schmersal Ltd., Sparrowhawk Close, WR14 1GL Malvern

The details and data referred to have been carefully checked. Images may diverge from original. Further technical data can be found in the manual. Technical amendments and errors possible.

Generated on: 12/01/2023, 12:39