



Part Numbers Guide for Bardiani Valves.

Canada and North America edition.

| CODE | MODEL | DESCRIPTION | |
|------------|-------------|--|----|
| BAP | BBZP | SINGLE SEAT | 4 |
| BAQ | BBYP | ASEPTIC SINGLE SEAT (STEAM BARRIER)..... | 4 |
| BAR | BBZR | LONG STROKE SINGLE SEAT | 4 |
| BAS | BBYR | ASEPTIC SINGLE SEAT LONG STROKE (STEAM BARRIER)..... | 4 |
| BAPC | BBZPA | EASY-MAINTENANCE DIVERT SINGLE SEAT VALVE..... | 5 |
| BAPD | BBZPA | EASY-MAINTENANCE SHUT-OFF SINGLE SEAT VALVE (REVERSE ACTING) | 6 |
| BAT | BBZO | TANK OUTLET SINGLE SEAT..... | 7 |
| BAV | BBZOG | TANK OUTLET SINGLE SEAT..... | 7 |
| BFF | BBZM | MANUAL SINGLE SEAT | 8 |
| BFH | BBZMF | MANUAL TANK OUTLET SINGLE SEAT..... | 9 |
| BFI | BBZMG | MANUAL TANK OUTLET SINGLE SEAT..... | 9 |
| BGD | BBZS1 | BY-PASS | 10 |
| BGE | BBZS5 | BY-PASS WITH PNEUMATIC LIFT..... | 11 |
| BAZ | BBWP | ASEPTIC VALVES WITH MEMBRANE | 12 |
| BHDB | BBZPM | REGULATING WITH GEMU POSITIONER | 13 |
| BHDB | BBZPM | REGULATING WITH BURKERT POSTIONER | 14 |
| BHFB | BBZK | MODULATING VALVE | 15 |
| BAMC | BZAW3 | DOUBLE SEAL BZAW..... | 16 |

CODEMODEL DESCRIPTION

| | | | |
|------------------------------|-----------------|--|----|
| BCW | B925 | DOUBLE SEAT MIXPROOF B925 | 17 |
| BC1..... | B935 | TANK OUTLET DOUBLE SEAT MIXPROOF | 18 |
| BC5 | B925PMO | PMO DOUBLE SEAT MIXPROOF..... | 19 |
| BEA..... | ZVF | PNEUMATIC BUTTERFLY..... | 20 |
| BEB..... | VVF | MANUAL BUTTERFLY..... | 20 |
| BKA..... | BBZQ..... | HIGH PRESSURE | 21 |
| QNXD | GIOTTO-TOP..... | CONTROL UNIT | 22 |
| QRD | BBTRD | SIGHT GLASS..... | 23 |
| NON STANDARD EXECUTIONS..... | | | 24 |

PNEUMATIC SINGLE SEAT VALVES (STANDARD BODIES)

Part number composition:

| VALVE MODEL | | | VALVE BODY COMBINATIONS | | CONNEX-TIONS | VALVE SIZE O.D. | | | STEEL GRADE | SEAL MATERIAL | ACTUATOR MODEL | | NON STANDARD |
|------------------|---|---|-------------------------|---|--------------|-----------------|---|---|-------------|---------------|------------------|----|-----------------------------|
| 1 | 2 | 3 | 4 | 5 | 6 | 7 | 8 | 9 | 10 | 11 | 12 | 13 | 14 |
| B | A | P | A | A | F | 2 | 0 | 0 | B | E | A | A | - |
| BBZP Single Seat | | | 1-L Body | | Weld Ends | DN2" | | | A316L | EPDM | Simple Acting NC | | (Example) SPECIFICATIONS |

1 2 3

| VALVE MODEL | Code |
|--|------------|
| BBZP single seat | BAP |
| BBZY aseptic single seat with steam barrier | BAQ |
| BBZR long stroke single seat | BAR |
| BBZYR aseptic long stroke single seat with steam barrier | BAS |

4 5

For flow direction diagrams, Click [BBZP-0818](#)

| VALVE BODY COMBINATIONS | Code |
|-------------------------|-----------|
| 1-L | AA |
| 2-T | AB |
| 3-LL | AC |
| 4-TL | AD |
| 5-LT | AE |
| 6-TT | AF |
| V-45° | AG |
| P7-LL | AL |
| P7-TL | AM |
| P7-LT | AN |
| P7-TT | AO |
| M8-LL | AP |
| M8-TL | AQ |
| M8-LT | AR |
| M8-TT | AS |
| M8-LLL | AT |
| M8-LTL | AU |
| M8-LLT | AV |
| M8-LTT | AW |
| M8-TLL | AX |
| M8-TTL | AY |
| M8-TLT | AZ |
| M8-TTT | A1 |
| M9-LLL | A3 |
| M9-TLL | A4 |
| M9-TLT | A5 |
| M9-LLT | A6 |
| M9-LTL | A7 |
| M9-TTT | A8 |
| M9-TTL | A9 |

6

| HOUSING CONNECTIONS | Code |
|----------------------|----------|
| Weld ends INCHES | F |
| Male SMS | G |
| Male BS(RJT) | H |
| Male IDF | I |
| Tri-Clamp | J |
| Complete Tri-Clamp | K |
| ISO GAS welding Ends | L |
| Weld Ends BPE | X |

Other connections available upon request

7 8 9

| VALVE SIZE O.D. | Code |
|-----------------|------------|
| 1/2" | 012 |
| 3/4" | 034 |
| 1" | 100 |
| 1"1/2 | 112 |
| 2" | 200 |
| 2"1/2 | 212 |
| 3" | 300 |
| 4" | 400 |
| 6" | 600 |

For mixed sizes body or different O.D. please [contact us](#).

10

| STAINLESS STEEL GRADE | Code |
|-----------------------|----------|
| AISI316L | B |

Other Stainless Steel grades available upon request

11

| SEAL MATERIAL (product contact) | Code |
|---------------------------------|----------|
| EPDM | E |
| HNBR | H |
| METAL | M |
| PTFE | P |
| SILICON | S |
| FKM | V |

12 13

| ACTUATOR MODEL | Code |
|---|-----------|
| Simple Acting Air to open / Spring to close (SA NC) | AA |
| Simple Acting Air to close / Spring to open (SA NO) | AB |
| Double Acting Air / Air (DA) | AC |
| Double Acting Air / Air + Spring to close (DA NC) | AD |
| Double Acting Air / Air + Spring to open (DA NO) | AE |
| Simple Acting Air to open / Spring to close (SA NC)+ TWIN-STOP actuator | AF |
| ATEX Simple Acting Air to open / Spring to close (SA NC) | AG |
| ATEX Simple Acting Air to close / Spring to open (SA NO) | AH |
| ATEX Double Acting Air / Air (DA) | AI |
| Simple Acting Air to open / Spring to open (SA NO)+ TWIN-STOP actuator | AJ |
| ATEX Simple Acting Air to open / Spring to open (SA NO)+ TWIN-STOP actuator | AK |
| ATEX Double Acting Air / Air + Spring to close (DA NC) | AL |
| ATEX Double Acting Air / Air + Spring to open (DA NO) | AM |

14

| | |
|-----------------|--------------|
| Out of standard | A---Z |
|-----------------|--------------|

[Click here for list of special features](#)

PNEUMATIC EASY-MAINTENANCE SINGLE SEAT VALVES

Part number composition:

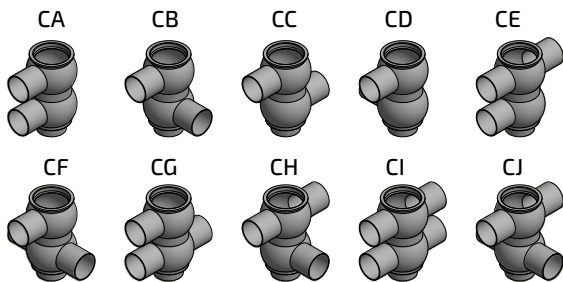
| VALVE MODEL | | | VALVE BODY COMBINATIONS | | CONNECTIONS | VALVE SIZE O.D. | | | STEEL GRADE | SEAL MATERIAL | ACTUATOR MODEL | | NON STANDARD |
|----------------------|---|---|-------------------------|---|--------------|-----------------|---|---|-------------|---------------|---------------------|----|-----------------------------|
| 1 | 2 | 3 | 4 | 5 | 6 | 7 | 8 | 9 | 10 | 11 | 12 | 13 | 14 |
| B | A | P | C | B | F | 2 | 0 | 0 | B | E | A | A | - |
| BBZPA Single Seat | | | 1-90 LL solid Body | | Weld Ends | DN2" | | | A316L | EPDM | Simple Acting NC | | (Example) SPECIFICATIONS |

1 2 3

| VALVE MODEL | code |
|---|------------|
| BBZPA single Seat | BAP |
| BBZYA aseptic single seat with steam barrier | BAQ |
| BBZRA long stroke single seat | BAR |
| BBZYRA aseptic long Stroke single seat with steam barrier | BAS |

5 4 For flow direction diagrams,
Click [BBZP-0818](#)

| SOLID BODY COMBINATIONS | Code |
|-------------------------|------|
| 1-OLL | CA |
| 1-9OLL | CB |
| 1-18OLL | CC |
| 1-27OLL | CD |
| 2-OLT | CE |
| 2-9OLT | CF |
| 3-OTL | CG |
| 3-9OTL | CH |
| 4-OTT | CI |
| 4-9OTT | CJ |



6

| HOUSING CONNECTIONS | Code |
|----------------------|----------|
| Weld ends INCHES | F |
| ISO GAS welding Ends | L |
| Weld Ends BPE | X |

Other connections available upon request

7 8 9

| VALVE SIZE O.D. | Code |
|-----------------|------------|
| 1" | 100 |
| 1 1/2" | 112 |
| 2" | 200 |
| 2 1/2" | 212 |
| 3" | 300 |
| 4" | 400 |
| 6" | 600 |

For mixed sizes body or different O.D.
please [contact us](#).

10

| STAINLESS STEEL GRADE | Code |
|-----------------------|------|
| AISI316L | B |

Other Stainless Steel grades available
upon request.

11

| SEAL MATERIAL (product contact) | Code |
|---------------------------------|------|
| EPDM | E |
| HNBR | H |
| FKM | V |

12 13

| ACTUATOR MODEL | Code |
|---|-----------|
| Simple Acting Air to open / Spring to close (SA NC) | AA |
| Simple Acting Air to close / Spring to open (SA NO) | AB |
| Double Acting Air / Air (DA) | AC |
| Double Acting Air / Air + Spring to close (DA NC) | AD |
| Double Acting Air / Air + Spring to open (DA NO) | AE |
| Simple Acting Air to open / Spring to close (SA NC)+ TWIN-STOP actuator | AF |
| ATEX Simple Acting Air to open / Spring to close (SA NC) | AG |
| ATEX Simple Acting Air to close / Spring to open (SA NO) | AH |
| ATEX Double Acting Air / Air (DA) | AI |
| Simple Acting Air to open / Spring to open (SA NO)+ TWIN-STOP actuator | AJ |
| ATEX Simple Acting Air to open / Spring to open (SA NO)+ TWIN-STOP actuator | AK |
| ATEX Double Acting Air / Air + Spring to close (DA NC) | AL |
| ATEX Double Acting Air / Air + Spring to open (DA NO) | AM |

14

| | |
|-----------------|--------------|
| Out of standard | A---Z |
|-----------------|--------------|

[Click here for list of special features](#)

EasyMaintenanceDESIGN

PNEUMATIC EASY-MAINTENANCE REVERSE ACTING SINGLE SEAT VALVES

Part number composition:

| VALVE MODEL | | | VALVE BODY COMBINATIONS | | CONNECTIONS | VALVE SIZE O.D. | | | STEEL GRADE | SEAL MATERIAL | ACTUATOR MODEL | | NON STANDARD |
|-------------------|---|---|-------------------------|---|-------------|-----------------|---|---|-------------|---------------|------------------|----|--------------------------|
| 1 | 2 | 3 | 4 | 5 | 6 | 7 | 8 | 9 | 10 | 11 | 12 | 13 | 14 |
| B | A | P | D | B | F | 2 | 0 | 0 | B | E | A | A | - |
| BBZPA Single Seat | | | 1-M8-90 LL solid Body | | Weld Ends | DN2" | | | A316L | EPDM | Simple Acting NC | | (Example) SPECIFICATIONS |

1 2 3

| VALVE MODEL | code |
|---|------------|
| BBZPA single seat | BAP |
| BBZYA aseptic single seat with steam barrier | BAQ |
| BBZRA long stroke single seat | BAR |
| BBZYRA aseptic long stroke single seat with steam barrier | BAS |

4 5 For flow direction diagrams, Click [BBZP-0818](#)

| VALVE BODY COMBINATIONS | Code |
|-------------------------|-----------|
| M8-1-0-LL | DA |
| M8-1-90-LL | DB |
| M8-1-180-LL | DC |
| M8-1-270-LL | DD |
| M8-1-0-LT | DE |
| M8-1-90-LT | DF |
| M8-1-0-TL | DG |
| M8-1-90-TL | DH |
| M8-1-0-TT | DI |
| M8-1-90-TT | DJ |



6

| HOUSING CONNECTIONS | Code |
|----------------------|----------|
| Weld ends INCHES | F |
| ISO GAS welding Ends | L |
| Weld Ends BPE | X |

Other connections available upon request

7 8 9

| VALVE SIZE O.D. | Code |
|-----------------|------------|
| 1" | 100 |
| 1 1/2" | 112 |
| 2" | 200 |
| 2 1/2" | 212 |
| 3" | 300 |
| 4" | 400 |
| 6" | 600 |

For mixed sizes body or different O.D. please [contact us](#).

10

| STAINLESS STEEL GRADE | Code |
|-----------------------|----------|
| AISI316L | B |

Other Stainless Steel grades available upon request

11

| SEAL MATERIAL (product contact) | Code |
|---------------------------------|----------|
| EPDM | E |
| HNBR | H |
| FKM | V |

12 13

| ACTUATOR MODEL | Code |
|---|-----------|
| Simple Acting Air to open / Spring to close (SA NC) | AA |
| Simple Acting Air to close / Spring to open (SA NO) | AB |
| Double Acting Air / Air | AC |
| Double Acting Air / Air + Spring to close (SA NC) | AD |
| Double Acting Air / Air + Spring to open (SA NO) | AE |
| Simple Acting Air to open / Spring to close (SA NC)+ TWIN-STOP actuator | AF |
| ATEX Simple Acting Air to open / Spring to close (SA NC) | AG |
| ATEX Simple Acting Air to close / Spring to open (SA NO) | AH |
| ATEX Double Acting Air / Air (DA) | AI |
| Simple Acting Air to open / Spring to open (SA NO)+ TWIN-STOP actuator | AJ |
| ATEX Simple Acting Air to open / Spring to open (SA NO)+ TWIN-STOP actuator | AK |
| ATEX Double Acting Air / Air + Spring to close (DA NC) | AL |
| ATEX Double Acting Air / Air + Spring to open (DA NO) | AM |

14

| | |
|-----------------|--------------|
| Out of standard | A---Z |
|-----------------|--------------|

[Click here for list of special features](#)

EasyMaintenanceDESIGN

PNEUMATIC TANK OUTLET SINGLE SEAT VALVES

Part number composition:

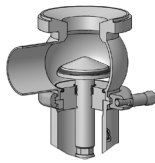
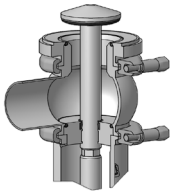
| VALVE MODEL | | | VALVE BODY COMBINATIONS | | CONNECTIONS | VALVE SIZE O.D. | | | STEEL GRADE | SEAL MATERIAL | ACTUATOR MODEL | | NON STANDARD |
|------------------------------|---|---|-------------------------|---|-------------|-----------------|---|---|-------------|---------------|------------------|----|--------------------------|
| 1 | 2 | 3 | 4 | 5 | 6 | 7 | 8 | 9 | 10 | 11 | 12 | 13 | 14 |
| B | A | T | A | A | F | 2 | 0 | 0 | B | E | A | A | - |
| BBZO Tank outlet Single Seat | | | L port Top flanged | | Weld Ends | DN2" | | | A316L | EPDM | Simple Acting NC | | (Example) SPECIFICATIONS |

1 2 3

| VALVE MODEL | Code |
|-------------------------------|------------|
| BBZO tank outlet single seat | BAT |
| BBZOG tank outlet single seat | BAV |

BBZO

BBZOG



10

| STAINLESS STEEL GRADE | Code |
|-----------------------|----------|
| AISI316L | B |

Other Stainless Steel grades available upon request

11

| SEAL MATERIAL (product contact) | Code |
|---------------------------------|----------|
| EPDM | E |
| HNBR | H |
| PTFE | P |
| SILICON | S |
| FKM | V |

4 5 For flow direction diagrams, Click [BBZP-0818](#)

| VALVE BODY COMBINATIONS | Code |
|---------------------------|-----------|
| L (1° with flange) | AA |
| T (1° with flange) | AB |
| V-45° (1° with flange) | AC |
| L (1° without flange) | AD |
| T (1° without flange) | AE |
| V-45° (1° without flange) | AF |

12 13

| ACTUATOR MODEL | Code |
|---|-----------|
| Simple Acting Air to open / Spring to close (SA NC) | AA |
| Simple Acting Air to close / Spring to open (SA NO) | AB |
| Double Acting Air / Air | AC |
| Double Acting Air / Air + Spring to close (SA NC) | AD |
| Double Acting Air / Air + Spring to open (SA NO) | AE |
| Simple Acting Air to open / Spring to close (SA NC)+ TWIN-STOP actuator | AF |
| ATEX Simple Acting Air to open / Spring to close (SA NC) | AG |
| ATEX Simple Acting Air to close / Spring to open (SA NO) | AH |
| ATEX Double Acting Air / Air (DA) | AI |
| Simple Acting Air to open / Spring to open (SA NO)+ TWIN-STOP actuator | AJ |
| ATEX Simple Acting Air to open / Spring to open (SA NO)+ TWIN-STOP actuator | AK |
| ATEX Double Acting Air / Air + Spring to close (DA NC) | AL |
| ATEX Double Acting Air / Air + Spring to open (DA NO) | AM |

6

| HOUSING CONNECTIONS | Code |
|----------------------|----------|
| Weld ends INCHES | F |
| Male SMS | G |
| Male BS(RJT) | H |
| Male IDF | I |
| Tri-Clamp | J |
| Complete Tri-Clamp | K |
| ISO GAS welding Ends | L |
| Weld Ends BPE | X |

Other connections available upon request

7 8 9

| VALVE SIZE O.D. | Code |
|-----------------|------------|
| 1 1/2" | 112 |
| 2" | 200 |
| 2 1/2" | 212 |
| 3" | 300 |
| 4" | 400 |

For mixed sizes body or different O.D. please [contact us](#).

14

| | |
|-----------------|--------------|
| Out of standard | A---Z |
|-----------------|--------------|

[Click here for list of special features](#)

MANUAL SINGLE SEAT VALVES

Part number composition:

| VALVE MODEL | | | VALVE BODY COMBINATIONS | | CONNECTIONS | VALVE SIZE O.D. | | | STEEL GRADE | SEAL MATERIAL | ACTUATOR MODEL | | NON STANDARD |
|-------------------------|---|---|-------------------------|---|-------------|-----------------|---|---|-------------|---------------|----------------|----|--------------------------|
| 1 | 2 | 3 | 4 | 5 | 6 | 7 | 8 | 9 | 10 | 11 | 12 | 13 | 14 |
| B | F | F | A | B | F | 2 | 0 | 0 | B | E | A | C | - |
| BBZM Manual Single Seat | | | 2-T port | | Weld Ends | DN2" | | | A316L | EPDM | With handle | | (Example) SPECIFICATIONS |

1 2 3

| VALVE MODEL | Code |
|---|------------|
| BBZM manual single seat | BFF |
| BBZMEX ATEX manual single seat | BFF |
| BBYM aseptic with steam barrier manual single seat | BFG |
| BBYMEX ATEX aseptic with steam barrier manual single seat | BFG |

4 5 For flow direction diagrams, Click [BBZP-0818](#)

| VALVE BODY COMBINATIONS | Code |
|-------------------------|-----------|
| 1-L | AA |
| 2-T | AB |
| 3-LL | AC |
| 4-TL | AD |
| 5-LT | AE |
| 6-TT | AF |
| V-45° | AG |
| P7-LL | AL |
| P7-TL | AM |
| P7-LT | AN |
| P7-TT | AO |
| M8-LL | AP |
| M8-TL | AQ |
| M8-LT | AR |
| M8-TT | AS |
| M8-LLL | AT |
| M8-LTL | AU |
| M8-LLT | AV |
| M8-LTT | AW |
| M8-TLL | AX |
| M8-TTL | AY |
| M8-TLT | AZ |
| M8-TTT | A1 |
| M9-LLL | A3 |
| M9-TLL | A4 |
| M9-TLT | A5 |
| M9-LLT | A6 |
| M9-LTL | A7 |
| M9-TTT | A8 |
| M9-TTL | A9 |

6

| HOUSING CONNECTIONS | Code |
|----------------------|----------|
| Weld ends INCHES | F |
| Male SMS | G |
| Male BS(RJT) | H |
| Male IDF | I |
| Tri-Clamp | J |
| Complete Tri-Clamp | K |
| ISO GAS welding Ends | L |
| Weld Ends BPE | X |

Other connections available upon request

7 8 9

| VALVE SIZE O.D. | Code |
|-----------------|------------|
| 3/4" | 034 |
| 1" | 100 |
| 1 1/2" | 112 |
| 2" | 200 |
| 2 1/2" | 212 |
| 3" | 300 |
| 4" | 400 |

For mixed sizes body or different O.D. please [contact us](#).

10

| STAINLESS STEEL GRADE | Code |
|-----------------------|----------|
| AISI316L | B |

Other Stainless Steel grades available upon request

11

| SEAL MATERIAL (product contact) | Code |
|---------------------------------|----------|
| EPDM | E |
| HNBR | H |
| METAL | M |
| PTFE | P |
| SILICON | S |
| FKM | V |

12 13

| HANDLE OPTION AND SHAFT PROFILE | Code |
|---|-----------|
| Without handle | AB |
| With handle | AC |
| ATEX with handle | AD |
| ATEX without handle | AE |
| Equipercantage shaft profile without handle | AF |
| Equipercantage shaft profile with handle | AG |
| Linear shaft profile without handle | AH |
| Linear shaft profile with handle | AI |
| Without handle INOX Cover | AJ |
| With handle INOX cover | AK |

14

| | |
|-----------------|-------------|
| Out of standard | A--Z |
|-----------------|-------------|

[Click here for list of special features](#)

MANUAL TANK OUTLET SINGLE SEAT VALVES

Part number composition:

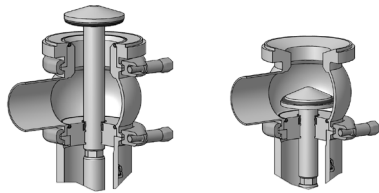
| VALVE MODEL | | | VALVE BODY COMBINATIONS | | CONNECTIONS | VALVE SIZE O.D. | | | STEEL GRADE | SEAL MATERIAL | ACTUATOR MODEL | | NON STANDARD |
|--------------------------------------|---|---|-------------------------|---|-------------|-----------------|---|---|-------------|---------------|----------------|----|--------------------------|
| 1 | 2 | 3 | 4 | 5 | 6 | 7 | 8 | 9 | 10 | 11 | 12 | 13 | 14 |
| B | H | F | A | A | F | 2 | 0 | 0 | B | E | A | C | - |
| BBZMF Tank outlet Manual Single Seat | | | L port Top flanged | | Weld Ends | DN2" | | | A316L | EPDM | With handle | | (Example) SPECIFICATIONS |

1 2 3

| VALVE MODEL | Code |
|--------------------------------------|------------|
| BBZMF manual tank outlet single seat | BFH |
| BBZMG manual tank outlet single seat | BFI |

BBZMF

BBZMG



4 5 For flow direction diagrams, Click [BBZP-0818](#)

| VALVE BODY COMBINATIONS | Code |
|---------------------------|----------|
| L (1° with flange) | A |
| T (1° with flange) | B |
| V-45° (1° with flange) | C |
| L (1° without flange) | D |
| T (1° without flange) | E |
| V-45° (1° without flange) | F |

6

| HOUSING CONNECTIONS | Code |
|----------------------|----------|
| Weld ends INCHES | F |
| Male SMS | G |
| Male BS(RJT) | H |
| Male IDF | I |
| Tri-Clamp | J |
| Complete Tri-Clamp | K |
| ISO GAS welding Ends | L |
| Weld Ends BPE | X |

Other connections available upon request

7 8 9

| VALVE SIZE O.D. | Code |
|-----------------|------------|
| 1"1/2 | 112 |
| 2" | 200 |
| 2"1/2 | 212 |
| 3" | 300 |
| 4" | 400 |

For mixed sizes body or different O.D. please [contact us](#).

10

| STAINLESS STEEL GRADE | Code |
|-----------------------|----------|
| AISI316L | B |

Other Stainless Steel grades available upon request

11

| SEAL MATERIAL (product contact) | Code |
|---------------------------------|----------|
| EPDM | E |
| HNBR | H |
| PTFE | P |
| SILICON | S |
| FKM | V |

12 13

| ACTUATOR MODEL | Code |
|----------------------|-----------|
| without handle | AB |
| with handle | AC |
| with handle ATEX | AD |
| without handle ATEX. | AE |

14

| | |
|-----------------|--------------|
| Out of standard | A---Z |
|-----------------|--------------|

[Click here for list of special features](#)

PRESSURE RELIEF VALVES

Part number composition:

| VALVE MODEL | | | VALVE BODY COMBINATIONS | | CONNECTIONS | VALVE SIZE O.D. | | | STEEL GRADE | SEAL MATERIAL | ACTUATOR MODEL | | NON STANDARD |
|--------------------------|---|---|-------------------------|---|--------------|-----------------|---|---|-------------|---------------|----------------|----|-----------------------------|
| 1 | 2 | 3 | 4 | 5 | 6 | 7 | 8 | 9 | 10 | 11 | 12 | 13 | 14 |
| B | G | D | A | A | F | 2 | 0 | 0 | B | E | A | A | - |
| BBZS1 Pressure relief | | | 1-L Body | | Weld Ends | DN2" | | | A316L | EPDM | Spring A | | (Example) SPECIFICATIONS |

1 2 3

| VALVE MODEL | Code |
|---|------------|
| BBZS1 pressure relief valve | BGD |
| BBZS1EX ATEX pressure relief valve | BGD |
| BBYS1 aseptic with steam barrier pressure relief valve | BGG |
| BBYS1EX ATEX aseptic with steam barrier pressure relief valve | BGG |

10

| STAINLESS STEEL GRADE | Code |
|-----------------------|----------|
| AISI316L | B |

Other Stainless Steel grades available upon request

11

| SEAL MATERIAL (product contact) | Code |
|---------------------------------|----------|
| EPDM | E |
| HNBR | H |
| METAL | M |
| PTFE | P |
| SILICON | S |
| FKM | V |

4 5

For flow direction diagrams,
Click: [BBZS1 catalogue](#)

| VALVE BODY COMBINATIONS | Code |
|-------------------------|-----------|
| 1-L | AA |
| 2-T | AB |
| M8-LL | AC |
| M8-TL | AD |
| M8-LT | AE |
| M8-TT | AF |
| V-45° | AG |

12 13

| SPRING TYPE | Code |
|---------------|-----------|
| spring A | AA |
| spring B | AB |
| spring C | AC |
| spring D | AD |
| spring E | AE |
| ATEX spring A | AF |
| ATEX spring B | AG |
| ATEX spring C | AH |
| ATEX spring D | AI |
| ATEX spring E | AJ |

6

| HOUSING CONNECTIONS | Code |
|----------------------|----------|
| Weld ends INCHES | F |
| Male SMS | G |
| Male BS(RJT) | H |
| Male IDF | I |
| Tri-Clamp | J |
| Complete Tri-Clamp | K |
| ISO GAS welding Ends | L |
| Weld Ends BPE | X |

Other connections available upon request

14

| | |
|-----------------|--------------|
| Out of standard | A---Z |
|-----------------|--------------|

[Click here for list of special features](#)

7 8 9

| VALVE SIZE O.D. | Code |
|-----------------|------------|
| 3/4" | 034 |
| 1" | 100 |
| 1 1/2" | 112 |
| 2" | 200 |
| 2 1/2" | 212 |
| 3" | 300 |
| 4" | 400 |

For mixed sizes body or different O.D.
please [contact us](#).

| SEALING PRESSURE RANGE (psi) | | | | | |
|------------------------------|--------|-----------|------------|------------|------------|
| INCHES DN | SPRING | | | | |
| | A | B | C | D | E |
| 1" | 7 - 58 | 14.5 - 94 | 14.5 - 145 | | |
| 1 1/2" | 7 - 33 | 14.5 - 50 | 14.5 - 94 | 14.5 - 145 | |
| 2" | | 7 - 29 | 14.5 - 55 | 14.5 - 101 | 14.5 - 145 |
| 2 1/2" | | | 7 - 29 | 14.5 - 48 | 14.5 - 111 |
| 3" | | | | 7 - 33 | 14.5 - 72 |
| 4" | | | | 7 - 18 | 14.5 - 58 |

PRESSURE RELIEF VALVES with CIP LIFT

Part number composition:

| VALVE MODEL | | | VALVE BODY COMBINATIONS | | CONNECTIONS | VALVE SIZE O.D. | | | STEEL GRADE | SEAL MATERIAL | ACTUATOR MODEL | | NON STANDARD |
|----------------------------|---|---|-------------------------|---|--------------|-----------------|---|---|-------------|---------------|-----------------|----|-----------------------------|
| 1 | 2 | 3 | 4 | 5 | 6 | 7 | 8 | 9 | 10 | 11 | 12 | 13 | 14 |
| B | G | E | A | A | F | 2 | 0 | 0 | B | E | A | A | - |
| BBZS5 PRV with cip lift | | | 1-L Body | | Weld Ends | DN2" | | | A316L | EPDM | Actuator 83A | | (Example) SPECIFICATIONS |

1 2 3

| VALVE MODEL | Code |
|---|------------|
| BBZS5 pressure relief valve with pneumatic cip lift | BGE |
| BBZS5EX ATEX pressure relief valve with pneumatic cip lift | BGE |
| BBYS5 aseptic with steam barrier pressure relief valve with pneumatic cip lift | BGH |
| BBYS5EX ATEX aseptic with steam barrier pressure relief valve with pneumatic cip lift | BGH |

4 5

For flow direction diagrams, Click: [BBZS5 Catalogue](#)

| VALVE BODY COMBINATIONS | Code |
|-------------------------|-----------|
| 1-L | AA |
| 2-T | AB |
| M8-LL | AC |
| M8-TL | AD |
| M8-LT | AE |
| M8-TT | AF |
| V-45° | AG |

6

| HOUSING CONNECTIONS | Code |
|----------------------|----------|
| Weld ends INCHES | F |
| Male SMS | G |
| Male BS(RJT) | H |
| Male IDF | I |
| Tri-Clamp | J |
| Complete Tri-Clamp | K |
| ISO GAS welding Ends | L |
| Weld Ends BPE | X |

Other connections available upon request

7 8 9

| VALVE SIZE O.D. | Code |
|-----------------|------------|
| 3/4" | 034 |
| 1" | 100 |
| 1 1/2" | 112 |
| 2" | 200 |
| 2 1/2" | 212 |
| 3" | 300 |
| 4" | 400 |

For mixed sizes body or different O.D. please [contact us](#).

10

| STAINLESS STEEL GRADE | Code |
|-----------------------|----------|
| AISI316L | B |

Other Stainless Steel grades available upon request

11

| SEAL MATERIAL (product contact) | Code |
|---------------------------------|----------|
| EPDM | E |
| HNBR | H |
| METAL | M |
| PTFE | P |
| SILICON | S |
| FKM | V |

12 13

| ACTUATOR TYPE | |
|----------------------|-----------|
| Actuator Ø 83A | AA |
| Actuator Ø 83B | AB |
| Actuator Ø 83C | AC |
| Actuator Ø 108A | AF |
| Actuator Ø 108B | AG |
| Actuator Ø 134A | AK |
| Actuator Ø 134B | AL |
| ATEX Actuator Ø 83A | BA |
| ATEX Actuator Ø 83B | BB |
| ATEX Actuator Ø 83C | BC |
| ATEX Actuator Ø 108A | BF |
| ATEX Actuator Ø 108B | BG |
| ATEX Actuator Ø 134A | BK |
| ATEX Actuator Ø 134B | BL |

14

| | |
|-----------------|--------------|
| Out of standard | A---Z |
|-----------------|--------------|

[Click here for list of special features](#)

| SEALING PRESSURE RANGE (psi) | | | | | | | |
|------------------------------|-------------------|---------|----------|----------|----------|-----------|-----------|
| INCHES | ACTUATOR Diameter | | | | | | |
| | 83A | 83B | 83C | 108A | 108B | 134A | 134B |
| 1" | 7 - 79 | 7 - 145 | | | | | |
| 1 1/2" | | 7 - 65 | 36 - 145 | | | | |
| 2" | | 7 - 39 | 29 - 87 | 65 - 145 | | | |
| 2 1/2" | | | 14 - 50 | 39 - 79 | 69 - 104 | 101 - 145 | |
| 3" | | | 14 - 39 | 26 - 55 | 52 - 72 | 65 - 101 | 104 - 123 |
| 4" | | | | 14 - 39 | 32 - 52 | 50 - 69 | 72 - 87 |

ASEPTIC with MEMBRANE SINGLE SEAT

Part number composition:

| VALVE MODEL | | | VALVE BODY COMBINATIONS | | CONNECTIONS | VALVE SIZE O.D. | | | STEEL GRADE | SEAL MATERIAL | ACTUATOR MODEL | | NON STANDARD |
|----------------------------|---|---|-------------------------|---|-------------|-----------------|---|---|-------------|---------------|------------------|----|--------------------------|
| 1 | 2 | 3 | 4 | 5 | 6 | 7 | 8 | 9 | 10 | 11 | 12 | 13 | 14 |
| B | A | 2 | A | A | F | 2 | 0 | 0 | B | E | A | A | - |
| BBWP aseptic with membrane | | | 1-L Body | | Weld Ends | DN2" | | | A316L | EPDM | Simple Acting NC | | (Example) SPECIFICATIONS |

1 2 3

| VALVE MODEL | Code |
|--|------------|
| BBWP aseptic with membrane single seat | BAZ |

4 5 For flow direction diagrams, Click: [BBWP Catalogue](#)

| VALVE BODY COMBINATIONS | Code |
|-------------------------|-----------|
| 1-L | AA |
| 2-T | AB |
| 3-LL | AC |
| 4-TL | AD |
| 5-LT | AE |
| 6-TT | AF |
| V-45° | AG |
| P7-LL | AL |
| P7-TL | AM |
| P7-LT | AN |
| P7-TT | AO |
| M8-LL | AP |
| M8-TL | AQ |
| M8-LT | AR |
| M8-TT | AS |
| M8-LLL | AT |
| M8-LTL | AU |
| M8-LLT | AV |
| M8-LTT | AW |
| M8-TLL | AX |
| M8-TTL | AY |
| M8-TLT | AZ |
| M8-TTT | A1 |
| M9-LLL | A3 |
| M9-TLL | A4 |
| M9-TLT | A5 |
| M9-LLT | A6 |
| M9-LTL | A7 |
| M9-TTT | A8 |
| M9-TTL | A9 |

6

| HOUSING CONNECTIONS | Code |
|----------------------|----------|
| Weld ends INCHES | F |
| Male SMS | G |
| Male BS(RJT) | H |
| Male IDF | I |
| Tri-Clamp | J |
| Complete Tri-Clamp | K |
| ISO GAS welding Ends | L |
| Weld Ends BPE | X |

Other connections available upon request

7 8 9

| VALVE SIZE O.D. | Code |
|-----------------|------------|
| 3/4" | 034 |
| 1" | 100 |
| 1 1/2" | 112 |
| 2" | 200 |
| 2 1/2" | 212 |
| 3" | 300 |
| 4" | 400 |

For mixed sizes body or different O.D. please [contact us](#).

10

| STAINLESS STEEL GRADE | Code |
|-----------------------|----------|
| AISI316L | B |

Other Stainless Steel grades available upon request

11

| SEAL MATERIAL (product contact) | Code |
|---------------------------------|----------|
| EPDM | E |
| HNBR | H |
| PTFE | P |
| SILICON | S |
| FKM | V |

12 13

| ACTUATOR MODEL | Code |
|---|-----------|
| Simple Acting Air to open / Spring to close (SA NC) | AA |
| Simple Acting Air to close / Spring to open (SA NO) | AB |
| Double Acting Air / Air | AC |
| Double Acting Air / Air + Spring to close (SA NC) | AD |
| Double Acting Air / Air + Spring to open (SA NO) | AE |
| Simple Acting Air to open / Spring to close (SA NC)+ TWIN-STOP actuator | AF |
| ATEX Simple Acting Air to open / Spring to close (SA NC) | AG |
| ATEX Simple Acting Air to close / Spring to open (SA NO) | AH |
| ATEX Double Acting Air / Air (DA) | AI |
| Simple Acting Air to open / Spring to open (SA NO)+ TWIN-STOP actuator | AJ |
| ATEX Simple Acting Air to open / Spring to open (SA NO)+ TWIN-STOP actuator | AK |
| ATEX Double Acting Air / Air + Spring to close (DA NC) | AL |
| ATEX Double Acting Air / Air + Spring to open (DA NO) | AM |

14

| Out of standard | A---Z |
|-----------------|-------|
| | |

[Click here for list of special features](#)

REGULATING VALVE WITH GEMU ELECTRO-POSITIONER

Part number composition:

| VALVE MODEL | | | VALVE BODY COMBINATIONS | | CONNECTIONS | VALVE SIZE O.D. | | | STEEL GRADE | SEAL MATERIAL | ACTUATOR MODEL | | NON STANDARD |
|---------------------------|---|---|--------------------------|---|--------------|-----------------|---|---|-------------|---------------|---------------------|----|-----------------------------|
| 1 | 2 | 3 | 4 | 5 | 6 | 7 | 8 | 9 | 10 | 11 | 12 | 13 | 14 |
| B | H | D | B | B | F | 2 | 0 | 0 | B | E | A | A | - |
| BBZPM Regulating valve | | | 1-L Body Linear shaft | | Weld Ends | DN2" | | | A316L | EPDM | Simple Acting NC | | (Example) SPECIFICATIONS |

1 2 3

| VALVE MODEL | Code |
|--|------------|
| BBZPM regulating valve with Gemu positioner | BHD |
| BBZYM Aseptic With steam barrier regulating valve with Gemu positioner | BHE |

4 5

For flow direction diagrams,
Click: [BBZPM Catalogue](#)

| VALVE BODY COMBINATIONS | Code |
|---|-----------|
| L body -EQUIPERCENTAGE shaft profile | BA |
| L body -LINEAR shaft profile | BB |
| T body -EQUIPERCENTAGE shaft profile | BC |
| T body -LINEAR shaft profile | BD |
| LL body -LINEAR shaft profile | BE |
| P7-LL body-LINEAR shaft profile | BF |
| V-45° body-LINEAR shaft profile | BG |
| M9-TLL body-LINEAR shaft profile | BH |
| V-45° body-EQUIPERCENTAGE shaft profile | BI |
| M8-LL body-EQUIPERCENTAGE shaft profile | BJ |
| M8-TL body-EQUIPERCENTAGE shaft profile | BK |
| M8-LT body-EQUIPERCENTAGE shaft profile | BL |
| M8-TT body-EQUIPERCENTAGE shaft profile | BM |
| LT body -LINEAR shaft profile | BN |
| M8-LL body -LINEAR shaft profile | BO |
| M8-TL body-LINEAR shaft profile | BP |
| M8-LT body-LINEAR shaft profile | BQ |
| M8-TT body -LINEAR shaft profile | BR |



7 8 9

| VALVE SIZE O.D. | Code |
|-----------------|------------|
| 3/4" | 034 |
| 1" | 100 |
| 1 1/2" | 112 |
| 2" | 200 |
| 2 1/2" | 212 |
| 3" | 300 |
| 4" | 400 |

For mixed sizes body or different O.D.
please [contact us](#).

10

| STAINLESS STEEL GRADE | Code |
|-----------------------|----------|
| AISI316L | B |

Other Stainless Steel grades available
upon request

11

| SEAL MATERIAL (product contact) | Code |
|---------------------------------|----------|
| EPDM | E |
| HNBR | H |
| METAL | M |
| PTFE | P |
| SILICON | S |
| FKM | V |

6

| HOUSING CONNECTIONS | Code |
|----------------------|----------|
| Weld ends INCHES | F |
| Male SMS | G |
| Male BS(RJT) | H |
| Male IDF | I |
| Tri-Clamp | J |
| Complete Tri-Clamp | K |
| ISO GAS welding Ends | L |
| Weld Ends BPE | X |

Other connections available upon request

12 13

| ACTUATOR TYPE and POSITIONER CONFIGURATION | Code |
|--|-----------|
| Simple Acting Air to open / Spring to close (SA NC) + POSITIONER | AA |
| Simple Acting Air to close / Spring to open (SA NO). + POSITIONER | AB |
| Double Acting Air / Air + POSITIONER | AC |
| Double Acting Air / Air + Spring to close (DA NC) + POSITIONER | AD |
| Double Acting Air / Air + Spring to open (DA NO)+ POSITIONER | AE |
| Simple Acting Air to open / Spring to close (SA NC)+ POSITIONER+ PID | AF |
| Simple Acting Air to close / Spring to open (SA NO)+ POSITIONER+ PID | AG |
| Double Acting Air / Air + POSITIONER+ PID. | AH |
| Double Acting Air / Air + Spring to close (DA NC) + POSITIONER+ PID | AI |
| Double Acting Air / Air + Spring to open (DA NO) + POSITIONER+ PID | AJ |
| Simple Acting Air to open / Spring to close (SA NC) + POSITIONER PROFIBUS | AK |
| Simple Acting Air to close / Spring to open (SA NO)+ POSITIONER PROFIBUS | AL |
| Double Acting Air / Air + POSITIONER PROFIBUS | AM |
| Double Acting Air / Air + Spring to close (DA NC) + POSITIONER PROFIBUS | AN |
| Double Acting Air / Air + Spring to open (DA NO)+ POSITIONER PROFIBUS | AO |
| Simple Acting Air to open / Spring to close (SA NC) + POSITIONER DEVICENET | AP |

14

| | |
|-----------------|--------------|
| Out of standard | A---Z |
|-----------------|--------------|

[Click here for list of special features](#)

REGULATING VALVE with BURKERT POSITIONER

Part number composition:

| VALVE MODEL | | | VALVE BODY COMBINATIONS | | CONNECTIONS | VALVE SIZE O.D. | | | STEEL GRADE | SEAL MATERIAL | ACTUATOR MODEL | | NON STANDARD |
|---------------------------|---|---|--------------------------|---|--------------|-----------------|---|---|-------------|---------------|---------------------|----|-----------------------------|
| 1 | 2 | 3 | 4 | 5 | 6 | 7 | 8 | 9 | 10 | 11 | 12 | 13 | 14 |
| B | H | D | B | B | F | 2 | 0 | 0 | B | E | B | A | - |
| BBZPM Regulating valve | | | 1-L Body Linear shaft | | Weld Ends | DN2" | | | A316L | EPDM | Simple Acting NC | | (Example) SPECIFICATIONS |

1 2 3

| VALVE MODEL | Code |
|---|------------|
| BBZPM regulating valve with Burkert positioner | BHD |
| BBZYM aseptic with steam barrier regulating valve with Burkert positioner | BHE |

4 5

For flow direction diagrams,
Click: [BBZPM Catalogue](#)

| VALVE BODY COMBINATIONS | Code |
|---|-----------|
| L body -EQUIPERCENTAGE shaft profile | BA |
| L body -LINEAR shaft profile | BB |
| T body -EQUIPERCENTAGE shaft profile | BC |
| T body -LINEAR shaft profile | BD |
| LL body -LINEAR shaft profile | BE |
| P7-LL body-LINEAR shaft profile | BF |
| V-45° body-LINEAR shaft profile | BG |
| M9-TLL body-LINEAR shaft profile | BH |
| V-45° body-EQUIPERCETANGE shaft profile | BI |
| M8-LL body-EQUIPERCETANGE shaft profile | BJ |
| M8-TL body-EQUIPERCETANGE shaft profile | BK |
| M8-LT body-EQUIPERCETANGE shaft profile | BL |
| M8-TT body-EQUIPERCETANGE shaft profile | BM |
| LT body -LINEAR shaft profile | BN |
| M8-LL body -LINEAR shaft profile | BO |
| M8-TL body-LINEAR shaft profile | BP |
| M8-LT body-LINEAR shaft profile | BQ |
| M8-TT body -LINEAR shaft profile | BR |



7 8 9

| VALVE SIZE O.D. | Code |
|-----------------|------------|
| 3/4" | 034 |
| 1" | 100 |
| 1 1/2" | 112 |
| 2" | 200 |
| 2 1/2" | 212 |
| 3" | 300 |
| 4" | 400 |

For mixed sizes body or different O.D.
please [contact us](#).

10

| STAINLESS STEEL GRADE | Code |
|-----------------------|----------|
| AISI316L | B |

Other Stainless Steel grades available
upon request

11

| SEAL MATERIAL (product contact) | Code |
|---------------------------------|----------|
| EPDM | E |
| HNBR | H |
| METAL | M |
| PTFE | P |
| SILICON | S |
| FKM | V |

6

| HOUSING CONNECTIONS | Code |
|----------------------|----------|
| Weld ends INCHES | F |
| Male SMS | G |
| Male BS(RJT) | H |
| Male IDF | I |
| Tri-Clamp | J |
| Complete Tri-Clamp | K |
| ISO GAS welding Ends | L |
| Weld Ends BPE | X |

Other connections available upon request

12 13

| ACTUATOR TYPE and POSITIONER CONFIGURATION | Code |
|---|-----------|
| Simple Acting Air to open / Spring to close (SA NC) + POSITIONER | BA |
| Simple Acting Air to open / Spring to close (SA NC) + POSITIONER | BB |
| Double Acting Air / Air + POSITIONER | BC |
| Double Acting Air / Air + Spring to close (DA NC) + POSITIONER | BD |
| Double Acting Air / Air + Spring to open (DA NO) + POSITIONER | BE |
| Simple Acting Air to open / Spring to close (SA NC) + POSITIONER+PID | BF |
| Simple Acting Air to close / Spring to open (SA NO).. + POSITIONER+PID | BG |
| Simple Acting Air to open / Spring to close (SA NC) . + POSITIONER +PROFIBUS | BK |
| Simple Acting Air to close / Spring to open (SA NO) . + POSITIONER+PROFIBUS | BL |
| Simple Acting Air to open / Spring to close (SA Nc) + POSITIONER +FEEDBACK | BM |
| Simple Acting Air to close / Spring to open (SA NO) . + POSITIONER +FEEDBACK | BN |
| ATEX Simple Acting Air to open / Spring to close (SA NC) + POSITIONER | BO |
| ATEX Simple Acting Air to close / Spring to open (SA NO) . + POSITIONER | BP |
| ATEX Double Acting Air / Air + POSITIONER | BQ |
| Double Acting Air / Air.+ POSITIONER+FEEDBACK | BR |
| ATEX Simple Acting Air to open / Spring to close (SA NC) +POSITIONER+FEEDBACK | BS |
| Simple Acting Air to open / Spring to close (SA NC) POSITIONER+FEEDBACK ens stops | BT |
| Double Acting Air / Air.+ POSITIONER+PID | BU |
| Double Acting Air / Air. + POSITIONER+FEEDBACK ens stops | BV |

14

| Out of standard | A---Z |
|-----------------|-------|
| | |

[Click here for list of special features](#)

MODULATING VALVE WITH SIEMENS ELECTRO-POSITIONER

Part number composition:

| VALVE MODEL | | | VALVE BODY COMBINATIONS | | CONNECTIONS | VALVE SIZE O.D. | | | STEEL GRADE | SEAL MATERIAL | ACTUATOR MODEL | | NON STANDARD |
|--------------------------|---|---|--------------------------|---|--------------|-----------------|---|---|-------------|---------------|-----------------------|----|-----------------------------|
| 1 | 2 | 3 | 4 | 5 | 6 | 7 | 8 | 9 | 10 | 11 | 12 | 13 | 14 |
| B | H | F | B | B | F | 2 | 0 | 0 | B | E | D | D | - |
| BBZK Modulating valve | | | 1-L Body Linear shaft | | Weld Ends | DN2" | | | A316L | EPDM | T275 NC Positioner | | (Example) SPECIFICATIONS |

1 2 3

| VALVE MODEL | Code |
|---|------------|
| BBZK Modulating valve | BHF |
| BBYK Aseptic With steam barrier Double Seal mix proof | BHG |
| BBZK ATEX Modulating valve | BHF |
| BBYK ATEX Aseptic With steam barrier Modulating valve | BHG |

4 5

For flow direction diagrams, Click: [BBZK Catalogue](#)

| VALVE BODY COMBINATIONS | CODE |
|--|-----------|
| L body -EQUIPERCENTAGE shaft profile | BA |
| L body -LINEAR shaft profile | BB |
| T body -EQUIPERCENTAGE shaft profile | BC |
| T body -LINEAR shaft profile | BD |
| LL body -LINEAR shaft profile | BE |
| P7-LL body-LINEAR shaft profile | BF |
| LT body -LINEAR shaft profile | BG |
| M8-LLL body-LINEAR shaft profile | BH |
| V-45° body-EQUIPERCENTAGE shaft profile | BI |
| V-45° body-EQUIPERCENTAGE shaft profile | BJ |
| V-45° body-LINEAR shaft profile | BK |
| M8-LLL body-EQUIPERCENTAGE shaft profile | BL |
| M8-TT body-EQUIPERCENTAGE shaft profile | BM |
| M8-LL body-EQUIPERCENTAGE shaft profile | BN |
| M8-TT body -LINEAR shaft profile | BO |
| M8-LL body-LINEAR shaft profile | BP |

6

| HOUSING CONNECTIONS | Code |
|----------------------|----------|
| Weld ends INCHES | F |
| Male SMS | G |
| Male BS(RJT) | H |
| Male IDF | I |
| Tri-Clamp | J |
| Complete Tri-Clamp | K |
| ISO GAS welding Ends | L |
| Weld Ends BPE | X |

Other connections available upon request

7 8 9

| VALVE SIZE O.D. | Code |
|-----------------|------|
| 3/4" | 034 |
| 1" | 100 |
| 1 1/2" | 112 |
| 2" | 200 |
| 2 1/2" | 212 |
| 3" | 300 |
| 4" | 400 |

For mixed sizes body or different O.D. please [contact us](#).

10

| STAINLESS STEEL GRADE | Code |
|-----------------------|------|
| AISI316L | B |

Other Stainless Steel grades available upon request

11

| SEAL MATERIAL (product contact) | Code |
|---------------------------------|------|
| EPDM | E |
| HNBR | H |
| METAL | M |
| PTFE | P |
| SILICON | S |
| FKM | V |

12 13

| PNEUMATIC HEAD ONLY | CODE |
|--|------|
| T200 NO 6-18PSI | D1 |
| T200 NC 3-15PSI | D2 |
| T200 NC 6-30PSI | D3 |
| T275 NO 3-15PSI | D4 |
| T275 NC 3-15PSI | D5 |
| T275 NC 9-32PSI | D6 |
| T360 NO 3-15PSI | D7 |
| T360 NC 3-15PSI | D8 |
| T360 NC 9-32PSI | D9 |
| PNEUMATIC HEAD + SIPART PS2 POSITIONER | |
| T200 NO 6-18PSI + POSIZ.SIEMENS SIPART | DA |
| T200 NC 3-15PSI + POSIZ.SIEMENS SIPART | DB |
| T200 NC 6-30PSI + POSIZ.SIEMENS SIPART | DC |
| T275 NO 3-15PSI + POSIZ.SIEMENS SIPART | DD |
| T275 NC 3-15PSI + POSIZ.SIEMENS SIPART | DE |
| T275 NC 9-32PSI + POSIZ.SIEMENS SIPART | DF |
| T360 NO 3-15PSI + POSIZ.SIEMENS SIPART | DG |
| T360 NC 3-15PSI + POSIZ.SIEMENS SIPART | DH |
| T360 NC 9-32PSI + POSIZ.SIEMENS SIPART | DI |
| ATEX PNEUMATIC HEAD ONLY | |
| T200 NO 6-18PSI ATEX | E1 |
| T200 NC 3-15PSI ATEX | E2 |
| T200 NC 6-30PSI ATEX | E3 |
| T275 NO 3-15PSI ATEX | E4 |
| T275 NC 3-15PSI ATEX | E5 |
| T275 NC 9-32PSI ATEX | E6 |
| T360 NO 3-15PSI ATEX | E7 |
| T360 NC 3-15PSI ATEX | E8 |
| T360 NC 9-32PSI ATEX | E9 |
| ATEX PNEUMATIC HEAD +SIPART PS2 ATEX POSITIONER | |
| T200 NO 6-18PSI + POSIZ.SIEMENS ATEX | EA |
| T200 NC 3-15PSI + POSIZ.SIEMENS ATEX | EB |
| T200 NC 6-30PSI + POSIZ.SIEMENS ATEX | EC |
| T275 NO 3-15PSI + POSIZ.SIEMENS ATEX | ED |
| T275 NC 3-15PSI + POSIZ.SIEMENS ATEX | EE |
| T275 NC 9-32PSI + POSIZ.SIEMENS ATEX | EF |
| T360 NO 3-15PSI + POSIZ.SIEMENS ATEX | EG |
| T360 NC 3-15PSI + POSIZ.SIEMENS ATEX | EH |
| T360 NC 9-32PSI + POSIZ.SIEMENS ATEX | EI |
| PNEUMATIC HEAD + SIPART PS2 POSITIONER with FEEDBACK | |
| T200 NC 6-30PSI + posiz.siemens sipart ps2 feedback | FC |
| T275 NO 3-15PSI + posiz.siemens sipart ps2 feedback | FD |
| T275 NC 9-32PSI + posiz.siemens sipart ps2 feedback | FF |
| PNEUMATIC HEAD + SIPART PS2 POSITIONER with PROFIBUS | |
| T200 NC 3-15PSI + posiz.siemens sipart ps2 profibus | GB |
| T360 NC 9-32PSI + posiz.siemens sipart ps2 profibus | GI |

14

| | |
|-----------------|--------------|
| Out of standard | A---Z |
|-----------------|--------------|

[Click here for list of special features](#)

DOUBLE SEAL MIX PROOF

Part number composition:

| VALVE MODEL | | | VALVE BODY COMBINATIONS | | CONNECTIONS | VALVE SIZE O.D. | | | STEEL GRADE | SEAL MATERIAL | ACTUATOR MODEL | | NON STANDARD |
|----------------------|---|---|-------------------------|---|--------------|-----------------|---|---|-------------|---------------|---------------------|----|-----------------------------|
| 1 | 2 | 3 | 4 | 5 | 6 | 7 | 8 | 9 | 10 | 11 | 12 | 13 | 14 |
| B | A | M | C | A | F | 2 | 0 | 0 | B | E | A | A | - |
| BZAW3 Double seal | | | 1-L Body | | Weld Ends | DN2" | | | A316L | EPDM | Simple Acting NC | | (Example) SPECIFICATIONS |

1 2 3

| VALVE MODEL | Code |
|---|------------|
| BZAW3 double seal mix proof | BAM |
| BYAW3 aseptic with steam barrier modulating valve | BHG |

4 5

For flow direction diagrams, Click: [BZAW Catalogue](#)

| VALVE BODY COMBINATIONS | Code |
|-------------------------|-----------|
| 1-L | CA |
| 2-T | CB |
| M8-0LL | CC |
| M8-90LL | CD |
| M8-180LL | CE |
| M8-270LL | CF |
| M8-0LT | CG |
| M8-90LT | CH |
| M8-0TL | CI |
| M8-90TL | CJ |
| M8-0TT | CK |
| M8-90TT | CL |
| M8-0LLL | CM |
| M8-90LLL | CN |
| M8-180LLL | CO |
| M8-270LLL | CP |
| M8-0LLT | CQ |
| M8-90LLT | CR |
| M8-0LTL | CS |
| M8-90LTL | CT |
| M8-0LTT | CU |
| M8-90LTT | CV |
| M8-0TLL | CW |
| M8-90TLL | CX |
| M8-180TLL | CY |
| M8-270TLL | CZ |
| M8-0TLT | C1 |
| M8-90TLT | C2 |
| M8-0TTL | C3 |
| M8-90TTL | C4 |
| M8-0TTT | C5 |
| M8-90TTT | C6 |
| V-45° | C7 |

6

| HOUSING CONNECTIONS | Code |
|----------------------|----------|
| Weld ends INCHES | F |
| Male SMS | G |
| Male BS(RJT) | H |
| Male IDF | I |
| Tri-Clamp | J |
| Complete Tri-Clamp | K |
| ISO GAS welding Ends | L |
| Weld Ends BPE | X |

Other connections available upon request

7 8 9

| VALVE SIZE O.D. | Code |
|-----------------|------------|
| 1"1/2 | 112 |
| 2" | 200 |
| 2"1/2 | 212 |
| 3" | 300 |
| 4" | 400 |

For mixed sizes body or different O.D. please [contact us](#).

10

| STAINLESS STEEL GRADE | Code |
|-----------------------|----------|
| AISI316L | B |

Other Stainless Steel grades available upon request

11

| SEAL MATERIAL (product contact) | Code |
|---------------------------------|----------|
| EPDM | E |
| HNBR | H |
| METAL | M |
| PTFE | P |
| SILICON | S |
| FKM | V |

12 13

| ACTUATOR TYPE + AUXILIARY VALVES CONNECTIONS (AVC) | Code |
|---|-----------|
| Simple Acting Air to open / Spring to close (SA NC) + AVC 1/4" ISO Thread | AA |
| Simple Acting Air to open / Spring to close (SA NC) + AVC 1/2" TRI-CLAMP | AB |
| Simple Acting Air to open / Spring to close (SA NC) + AVC DN6mm WELD ends | AC |
| Double Acting Air / Air + Spring to close (DA NC) + AVC 1/4" ISO Thread | AD |
| Double Acting Air / Air + Spring to close (DA NC) + AVC 1/2" TRI-CLAMP | AE |
| Double Acting Air / Air + Spring to close (DA NC) + AVC DN6mm WELD ends | AF |
| Simple Acting Air to open / Spring to close (SA NC) + AVC 1/4" M14 Thread x 1.5mm | AG |
| Double Acting Air / Air + Spring to close (DA NC) + AVC 1/4" M14 Thread x 1.5mm | AH |

14

| | |
|-----------------|--------------|
| Out of standard | A---Z |
|-----------------|--------------|

[Click here for list of special features](#)

FULL BALANCED LEAK FREE DOUBLE SEAT VALVE

Part number composition:

| VALVE MODEL | | | VALVE BODY COMBINATIONS | | CONNECTIONS | VALVE SIZE O.D. | | | STEEL GRADE | SEAL MATERIAL | ACTUATOR MODEL | | NON STANDARD |
|---------------------|---|---|-------------------------|---|--------------|-----------------|---|---|-------------|---------------|------------------------------|----|-----------------------------|
| 1 | 2 | 3 | 4 | 5 | 6 | 7 | 8 | 9 | 10 | 11 | 12 | 13 | 14 |
| B | C | W | A | N | F | 2 | 0 | 0 | B | E | A | D | - |
| B925 Double seat | | | 4-90 TT Solid body | | Weld Ends | DN2" | | | A316L | EPDM | Standard with indications | | (Example) SPECIFICATIONS |

1 2 3

| VALVE MODEL | Code |
|--|------------|
| B925 full balanced leak free double seat mix proof with seat lifters | BCW |
| B925A aseptic with steam barrier full balanced leak free double seat mix proof with seat lifters | BCZ |
| B925B full balanced leak free double seat mix proof with seat lifters + external CIP cleaning | BCY |
| B925V aseptic with steam barrier full balanced leak free double seat mix proof with seat lifters + external CIP cleaning | BCX |

7 8 9

| VALVE SIZE O.D. | Code |
|-----------------|------------|
| 1" | 100 |
| 1 1/2" | 112 |
| 2" | 200 |
| 2 1/2" | 212 |
| 3" | 300 |
| 4" | 400 |

For mixed sizes body or different O.D. please [contact us](#).

10

| STAINLESS STEEL GRADE | Code |
|-----------------------|----------|
| AISI316L | B |

Other Stainless Steel grades available upon request

11

| SEAL MATERIAL (product contact) | Code |
|---------------------------------|----------|
| EPDM | E |
| HNBR | H |
| SILICON | S |
| FKM | V |

4 5

For flow direction diagrams, Click: [B925 Catalogue](#)

| VALVE BODY COMBINATIONS: | Code |
|--|-----------|
| 1-LL (Orientable) | AA |
| 2-LT (Orientable) | AB |
| 3-TL (Orientable) | AC |
| 4-TT (Orientable) | AD |
| 1-0LL (Solid body 0 deegres between ports) | AE |
| 1-90LL (Solid body 90 deegres between ports) | AF |
| 1-180LL (Solid body 180 deegres between ports) | AG |
| 1-270LL (Solid body 270 deegres between ports) | AH |
| 2-0LT (Solid body 0 deegres between ports) | AI |
| 2-90LT (Solid body 90 deegres between ports) | AJ |
| 3-0TL (Solid body 0 deegres between ports) | AK |
| 3-90TL (Solid body 90 deegres between ports) | AL |
| 4-0TT (Solid body 0 deegres between ports) | AM |
| 4-90TT (Solid body 90 deegres between ports) | AN |
| 5-LLL (Orientable) | AO |
| 6-LLT (Orientable) | AP |
| 7-LTT (Orientable) | AQ |
| 8-TTT (Orientable) | AR |
| 9-LTL (Orientable) | AS |
| A-TLT (Orientable) | AT |
| B-TTL (Orientable) | AU |
| C-TLL (Orientable) | AV |

12 13

| ACTUATOR MODEL | Code |
|--|-----------|
| ATEX Standard with seat lifters | AB |
| Standard with seat lifters. +1auxiliary prox | AC |
| Standard with seat lifters +lift indications | AD |

14

| | |
|-----------------|--------------|
| Out of standard | A---Z |
|-----------------|--------------|

[Click here for list of special features](#)

6

| HOUSING CONNECTIONS | Code |
|----------------------|----------|
| Weld ends INCHES | F |
| Male SMS | G |
| Male BS(RJT) | H |
| Male IDF | I |
| Tri-Clamp | J |
| Complete Tri-Clamp | K |
| ISO GAS welding Ends | L |
| Weld Ends BPE | X |

Other connections available upon request

TANK OUTLET DOUBLE SEAT MIX PROOF

Part number composition:

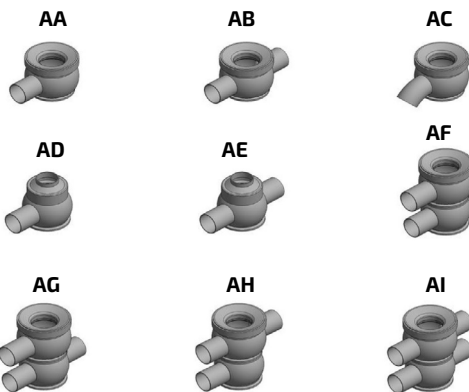
| VALVE MODEL | | | VALVE BODY COMBINATIONS | | CONNECTIONS | VALVE SIZE O.D. | | | STEEL GRADE | SEAL MATERIAL | ACTUATOR MODEL | | NON STANDARD |
|-------------------------------|---|---|--------------------------|---|-------------|-----------------|---|---|-------------|---------------|---------------------------|----|--------------------------|
| 1 | 2 | 3 | 4 | 5 | 6 | 7 | 8 | 9 | 10 | 11 | 12 | 13 | 14 |
| B | C | 1 | A | A | F | 2 | 0 | 0 | B | E | A | D | - |
| BB935 tank outlet double seat | | | L Body top outlet flange | | Weld Ends | DN2" | | | A316L | EPDM | Standard with indications | | (Example) SPECIFICATIONS |

1 2 3

| VALVE MODEL | Code |
|--|------------|
| B935 tank outlet full balanced leak free double seat mix proof with seat lifters | BC1 |

4 5 For flow direction diagrams, Click: [B935 Catalogue](#)

| VALVE BODY COMBINATIONS: | Code |
|--|-----------|
| L body (with tank outlet flange) | AA |
| T body (with tank outlet flange) | AB |
| V-45° body (with tank outlet flange) | AC |
| L body with weld end connections | AD |
| T body with weld end connections | AE |
| LL body with weld end connections | AF |
| LT body with weld end connections | AG |
| TL body with weld end connections | AH |
| TT body with weld end connections | AI |
| T-V-45° body (with tank outlet flange) | AJ |



6

| HOUSING CONNECTIONS | Code |
|----------------------|----------|
| Weld ends INCHES | F |
| Male SMS | G |
| Male BS(RJT) | H |
| Male IDF | I |
| Tri-Clamp | J |
| Complete Tri-Clamp | K |
| ISO GAS welding Ends | L |
| Weld Ends BPE | X |

Other connections available upon request

7 8 9

| VALVE SIZE O.D. | Code |
|-----------------|------------|
| 1" | 100 |
| 1"1/2 | 112 |
| 2" | 200 |
| 2"1/2 | 212 |
| 3" | 300 |
| 4" | 400 |

For mixed sizes body or different O.D. please [contact us](#).

10

| STAINLESS STEEL GRADE | Code |
|-----------------------|----------|
| AISI316L | B |

Other Stainless Steel grades available upon request

11

| SEAL MATERIAL (product contact) | Code |
|---------------------------------|----------|
| EPDM | E |
| HNBR | H |
| SILICON | S |
| FKM | V |

12 13

| ACTUATOR MODEL | Code |
|--|-----------|
| ATEX Standard with seat lifters | AB |
| Standard with seat lifters. +1auxiliary prox | AC |
| Standard with seat lifters +lift indications | AD |

14

| | |
|-----------------|--------------|
| Out of standard | A---Z |
|-----------------|--------------|

[Click here for list of special features](#)

FULL BALANCED LEAK FREE DOUBLE SEAT VALVE

Part number composition:

| VALVE MODEL | | | VALVE BODY COMBINATIONS | | CONNECTIONS | VALVE SIZE O.D. | | | STEEL GRADE | SEAL MATERIAL | ACTUATOR MODEL | | NON STANDARD |
|----------------------|---|---|-------------------------|---|-------------|-----------------|---|---|-------------|---------------|---------------------------|----|--------------|
| 1 | 2 | 3 | 4 | 5 | 6 | 7 | 8 | 9 | 10 | 11 | 12 | 13 | 14 |
| B | C | 5 | A | N | F | 2 | 0 | 0 | B | E | A | D | - |
| B915 PMO Double seat | | | 4-90 TT solid body | | Weld Ends | DN2" | | | A316L | EPDM | Standard with indications | | (Example) |
| SPECIFICATIONS | | | | | | | | | | | | | |

1 2 3

| VALVE MODEL | Code |
|---|------------|
| B915 PMO full balanced leak free double seat mix proof with seat lifters | BC5 |
| B915A PMO aseptic with steam barrier full balanced leak free double seat mix proof with seat lifters | BC8 |
| B915B PMO full balanced leak free double seat mix proof with seat lifters+ external CIP cleaning | BC7 |
| B915V PMO aseptic with steam barrier full balanced leak free double seat mix proof with seat lifters + external CIP cleaning | BC6 |

7 8 9

| VALVE SIZE O.D. | Code |
|-----------------|------------|
| 1" | 100 |
| 1"1/2 | 112 |
| 2" | 200 |
| 2"1/2 | 212 |
| 3" | 300 |
| 4" | 400 |

For mixed sizes body or different O.D. please [contact us](#).

4 5 For flow direction diagrams, Click: [B915 PMO](#)

| VALVE BODY COMBINATIONS: | Code |
|--|-----------|
| 1-LL (Orientable) | AA |
| 2-LT (Orientable) | AB |
| 3-TL (Orientable) | AC |
| 4-TT (Orientable) | AD |
| 1-0LL (Solid body 0 deegres between ports) | AE |
| 1-90LL (Solid body 90 deegres between ports) | AF |
| 1-180LL (Solid body 180 deegres between ports) | AG |
| 1-270LL (Solid body 270 deegres between ports) | AH |
| 2-0LT (Solid body 0 deegres between ports) | AI |
| 2-90LT (Solid body 90 deegres between ports) | AJ |
| 3-0TL (Solid body 0 deegres between ports) | AK |
| 3-90TL (Solid body 90 deegres between ports) | AL |
| 4-0TT (Solid body 0 deegres between ports) | AM |
| 4-90TT (Solid body 90 deegres between ports) | AN |

10

| STAINLESS STEEL GRADE | Code |
|-----------------------|----------|
| AISI316L | B |

Other Stainless Steel grades available upon request

11

| SEAL MATERIAL (product contact) | Code |
|---------------------------------|----------|
| EPDM | E |
| HNBR | H |
| SILICON | S |
| FKM | V |

6

| HOUSING CONNECTIONS | Code |
|----------------------|----------|
| Weld ends INCHES | F |
| Male SMS | G |
| Male BS(RJT) | H |
| Male IDF | I |
| Tri-Clamp | J |
| Complete Tri-Clamp | K |
| ISO GAS welding Ends | L |
| Weld Ends BPE | X |

Other connections available upon request

12 13

| ACTUATOR MODEL | Code |
|--|-----------|
| Standard with seat lifters | AA |
| ATEX Standard with seat lifters | AB |
| Standard with seat lifters. +1auxiliary prox | AC |
| Standard with seat lifters +lift indications | AD |

14

| | |
|-----------------|--------------|
| Out of standard | A---Z |
|-----------------|--------------|

[Click here for list of special features](#)

BUTTERFLY VALVES

Part number composition:

| VALVE MODEL | | | VALVE BODY COMBINATIONS | | | VALVE SIZE O.D. | | | STEEL GRADE | SEAL MATERIAL | ACTUATOR MODEL | | NON STANDARD | (Example) SPECIFICATIONS |
|----------------------------|---|---|-------------------------|---|---|-----------------|---|---|-------------|---------------|---------------------|----|--------------|-----------------------------|
| 1 | 2 | 3 | 4 | 5 | 6 | 7 | 8 | 9 | 10 | 11 | 12 | 13 | 14 | |
| B | E | A | A | A | L | 2 | 0 | 0 | B | E | B | A | - | |
| ZVF Pneumatic butterfly | | | weld ends | | | DN2" | | | A316L | EPDM | Simple Acting NC | | | |

1 2 3

| VALVE MODEL | Code |
|------------------------------------|------------|
| ZVF pneumatic butterfly valve | BEA |
| VVF manual butterfly valve | BEB |
| ZVF ATEX pneumatic butterfly valve | BEA |
| VVF ATEX manual butterfly valve | BEB |

4 5 6

Link to catalogue
Click: [ZVF Catalogue](#)

| VALVE BODY COMBINATIONS: | |
|--------------------------|------------|
| weld. INCHES | AAL |
| Male Thread SMS | AAM |
| male/M+G. SMS | AAN |
| weld./M+G. SMS | AAO |
| Male Thread BS (RJT) | AAP |
| Male Thread IDF | AAQ |
| Tri-Clamp | AAR |
| weld. ISO | AAS |
| Male Thread ISO | AAT |
| WAFER4 INCHES | AC7 |

7 8 9

| VALVE SIZE O.D. | Code |
|-----------------|------------|
| 1/4" | 014 |
| 1/2" | 012 |
| 3/4" | 034 |
| 1" | 100 |
| 1 1/2" | 112 |
| 1 1/4" | 114 |
| 2" | 200 |
| 2 1/2" | 212 |
| 3" | 300 |
| 4" | 400 |
| 5" | 500 |
| 6" | 600 |

10

| STAINLESS STEEL GRADE | Code |
|-----------------------|----------|
| AISI316L | B |

Other Stainless Steel grades available upon request

11

| SEAL MATERIAL (product contact) | Code |
|---------------------------------|----------|
| EPDM | E |
| HNBR | H |
| SILICON | S |
| FKM | V |

12 13

| ACTUATOR/HANDLE MODEL | Code |
|---|-----------|
| MACH 83 Simple Acting Air to open / Spring to close (SA NC) | BA |
| MACH 83 Simple Acting Air to close / Spring to open (SA NO) | BB |
| MACH 83 Double Acting Air / Air (DA) | BC |
| MACH 83 Double Acting Air / Air + Spring to close (DA NC) | BD |
| MACH 83 Double Acting Air / Air + Spring to open (DA NO) | BE |
| MACH 98 Simple Acting Air to open / Spring to close (SA NC) | BF |
| MACH 98 Simple Acting Air to close / Spring to open (SA NO) | BG |
| MACH 98 Double Acting Air / Air (DA) | BH |
| MACH 98 Double Acting Air / Air + Spring to close (DA NC) | BI |
| MACH 98 Double Acting Air / Air + Spring to open (DA NO) | BJ |
| MACH 156 Simple Acting Air to open / Spring to close (SA NC) | BK |
| MACH 156 Simple Acting Air to close / Spring to open (SA NO) | BL |
| MACH 156 Double Acting Air / Air (DA) | BM |
| MACH 156 Double Acting Air / Air + Spring to close (DA NC) | BN |
| MACH 156 Double Acting Air / Air + Spring to open (DA NO) | BO |
| ATEX MACH 156 Simple Acting Air to open / Spring to close (SA NC) | BP |
| ATEX MACH 98 Simple Acting Air to open / Spring to close (SA NC) | BQ |
| ATEX MACH 83 Simple Acting Air to open / Spring to close (SA NC) | BR |
| ATEX MACH 83 Double Acting Air / Air (DA) | BS |
| ATEX MACH 98 Simple Acting Air to close / Spring to open (SA NO) | BT |
| ATEX MACH 83 Simple Acting Air to close / Spring to open (SA NO) | BU |
| ATEX MACH 156 Simple Acting Air to close / Spring to open (SA NO) | BV |
| ATEX MACH 98 Double Acting Air / Air (DA) | BW |
| ATEX MACH 156 Double Acting Air / Air (DA) | BX |
| ATEX MACH 83 Double Acting Air / Air + Spring to close (DA NC) | BY |
| ATEX MACH 98 Double Acting Air / Air + Spring to close (DA NC) | BZ |
| Plastic handle | AA |
| Plastic handle + 1 PNP proximity 24v (closed position) | AB |
| Plastic handle + 2 PNP proximities 24v | AC |
| Without handle | AE |
| ATEX Plastic handle | AI |
| ATEX Plastic handle + 2 PNP proximities 24v | AJ |
| ATEX Plastic handle + 1 PNP proximity 24v (closed position) | AN |
| Stainless Steel handle | AQ |
| Plastic handle no logo | AS |
| Stainless Steel handle + 1 PNP proximity 24v (closed position) | AT |
| Stainless Steel handle + 2 PNP proximities 24v | AU |
| ATEX Stainless Steel handle | AV |
| Flow control Handle | AX |
| Support for actuator | A1 |
| Support for actuator F04 11 | A2 |
| Support for actuator F05 14 | A3 |
| Support for actuator F07 17 | A4 |
| ATEX Stainless Steel handle + 1 PNP proximity 24v (closed position) | A6 |
| ATEX Stainless Steel handle + 2 PNP proximities 24v | A7 |
| ATEX Flow control Handle | A8 |

| ACTUATOR SIZING |
|-----------------------------------|
| mach83 (DN1/2"-3/4"-1"-1 1/2"-2") |
| mach98 (DN2 1/2"-3"-4") |
| mach156 (DN5"-6") |

14

| Out of standard | A---Z |
|-----------------|-------|
|-----------------|-------|

[Click here for list of special features](#)

HIGH PRESSURE VALVES

Part number composition:

| VALVE MODEL | | | VALVE BODY COMBINATIONS | | CONNECTIONS | VALVE SIZE O.D. | | | STEEL GRADE | SEAL MATERIAL | ACTUATOR MODEL | | NON STANDARD |
|-----------------------|---|---|-------------------------|---|--------------|-----------------|---|---|-------------|---------------|----------------|----|-----------------------------|
| 1 | 2 | 3 | 4 | 5 | 6 | 7 | 8 | 9 | 10 | 11 | 12 | 13 | 14 |
| B | K | A | A | A | F | 2 | 0 | 0 | B | M | A | A | - |
| BBZQ High pressure | | | 1-L Body | | Weld Ends | DN2" | | | A316L | METAL | CYL.108 DA | | (Example) SPECIFICATIONS |

1 2 3

| VALVE MODEL | Code |
|---|------------|
| BBZQ high pressure single seat | BKA |
| BBYQ aseptic with steam barrier high pressure single seat | BAQ |

10

| STAINLESS STEEL GRADE | Code |
|-----------------------|----------|
| AISI316L | B |

Other Stainless Steel grades available upon request

11

| SEAL MATERIAL (product contact) | Code |
|---------------------------------|----------|
| METAL sealing + EPDM gaskets | L |
| METAL sealing + FKM gaskets | M |
| P.T.F.E. sealing + FKM gaskets | P |
| P.T.F.E. sealing + EPDM gaskets | Q |

4 5 For flow direction diagrams,
Click: [BBZQ Catalogue](#)

| VALVE BODY COMBINATIONS | Code |
|-------------------------|-----------|
| 1-L | AA |
| 2-T | AB |
| 3-LL | AC |
| 4-TL | AD |
| 5-LT | AE |
| 6-TT | AF |
| P7-LL | AL |
| P7-TL | AM |
| P7-LT | AN |
| P7-TT | AO |
| M8-LL | AP |
| M8-TL | AQ |
| M8-LT | AR |
| M8-TT | AS |

For flow direction diagram, see document:
[BBZQ Catalogue](#)

6

| HOUSING CONNECTIONS | Code |
|----------------------|----------|
| Weld ends INCHES | F |
| Male SMS | G |
| Male BS(RJT) | H |
| Male IDF | I |
| Tri-Clamp | J |
| Complete Tri-Clamp | K |
| ISO GAS welding Ends | L |
| Weld Ends BPE | X |

Other connections available upon request

7 8 9

| VALVE SIZE O.D. | Code |
|-----------------|------------|
| 1" | 100 |
| 1"1/2 | 112 |
| 2" | 200 |
| 2"1/2 | 212 |
| 3" | 300 |
| 4" | 400 |

For mixed sizes body or different O.D.
please [contact us](#).

12 13

| ACTUATOR MODEL | Code |
|--|-----------|
| Cyl.108 Double Acting Air / Air (DA) | AA |
| Cyl.108 Double Acting Air / Air + Spring to close (DA NC) | AB |
| Cyl.108 Double Acting Air / Air + Spring to open (DA NO) | AC |
| Cyl.134 Double Acting Air / Air (DA) | AH |
| Cyl.134 Double Acting Air / Air + Spring to close (DA NC) | AI |
| Cyl.134 Double Acting Air / Air + Spring to open (DA NO) | AJ |
| Cyl.156 Double Acting Air / Air (DA) | AO |
| Cyl.156 Double Acting Air / Air + Spring to close (DA NC) | AP |
| Cyl.156 Double Acting Air / Air + Spring to open (DA NO) | AQ |
| Cyl.108 ATEX Double Acting Air / Air (DA) | BA |
| Cyl.108 ATEX Double Acting Air / Air + Spring to close (DA NC) | BB |
| Cyl.108 ATEX Double Acting Air / Air + Spring to open (DA NO) | BC |
| Cyl.134 ATEX Double Acting Air / Air (DA) | BH |
| Cyl.134 ATEX Double Acting Air / Air + Spring to close (DA NC) | BI |
| Cyl.134 ATEX Double Acting Air / Air + Spring to open (DA NO) | BJ |
| Cyl.156 ATEX Double Acting Air / Air (DA) | BO |
| Cyl.156 ATEX Double Acting Air / Air + Spring to close (DA NC) | BP |
| Cyl.156 ATEX Double Acting Air / Air + Spring to open (DA NO) | BQ |
| Cyl.207 Double Acting Air / Air (DA) | A1 |
| Cyl.320 Double Acting Air / Air (DA) | A2 |
| Cyl.360 Double Acting Air / Air (DA) | A3 |
| Cyl.207 ATEX Double Acting Air / Air (DA) | B1 |
| Cyl.320 ATEX Double Acting Air / Air (DA) | B2 |
| Cyl.360 ATEX Double Acting Air / Air (DA) | B3 |
| Cyl.207 Double Acting Air / Air (DA) + hydr.dumper | C1 |
| Cyl.320 Double Acting Air / Air (DA) + hydr.dumper | C2 |
| Cyl.360 Double Acting Air / Air (DA) + hydr.dumper | C3 |

14

| | |
|-----------------|--------------|
| Out of standard | A---Z |
|-----------------|--------------|

[Click here for list of special features](#)

GIOTTO TOP CONTROL UNITS

Part number composition:

| Control unit GIOTTO TOP | | | | ASSEMBLED/ SPARE PART | LOGO | CAM | WIRING | FEED- BACK | SOLENOID VALVES | COMM. System | AIR INLET | SOL. BRAND | NON STANDARD | |
|----------------------------|---|---|---|--------------------------|----------|-----|---------------|-----------------|--------------------|-----------------|------------------|---------------|-----------------|----------------|
| 1 | 2 | 3 | 4 | 5 | 6 | 7 | 8 | 9 | 10 | 11 | 12 | 13 | 14 | (Example) |
| Q | N | X | D | A | A | A | B | E | B | E | B | B | - | |
| Giotto top 3.0-360 | | | | Assembled | Standard | M12 | PG11 Gland | #2 PNP prox. | #1 Solenoid | AS-i CARD | 1/4" polytube | SMC | | SPECIFICATIONS |

1 **2** **3** **4** [Link to catalogue](#)
Click: [GIOTTO Catalogue](#)

| CONTROL UNIT | Code |
|--------------------------|-------------|
| Giotto Top 3.0- 360 | QNXD |
| Giotto Top ATEX 3.0- 360 | QNXF |

5

| ASSEMBLED - SPARE PART | Code |
|------------------------|----------|
| Assembled on a valve | A |
| Purchased a spare part | 1 |

6

| LOGO | Code |
|-------------|-------------|
| Standard | A |
| Custom Logo | A--Z |

[Contact us to obtain your letter for Custom Logo.](#)

7

| CAM for position detection | Code |
|---|----------|
| M12 stainless steel cam | A |
| M16 Stainless Steel cam (BBZP DN5" and DN6" only) | E |

8

| WIRING CONNETIONS | Code |
|--|----------|
| #7-pins connector (complete with Female) | A |
| PG11 cable gland | B |
| PG20 (M20x1.5mm) Cable gland | C |
| M12 #5-pins connector | D |
| M12 #8-pins connector | E |

9

| POSITION FEEDBACK | Code |
|---|----------|
| no components | A |
| 1 Proximity PNP 24V | D |
| 2 Proximity PNP 24V | E |
| 2 Prox.PNP 24V + PG7 for external PNP proximity | F |
| 1 Prox.PNP 24V + PG7 for external PNP proximity | J |

10

| SOLENOID VALVE | Code |
|---|----------|
| no components | A |
| 1 solenoid valve NC 24V | B |
| 2 solenoid valves NC 24V | C |
| 3 solenoid valves NC 24V (mix proof B9** ranges) | D |
| 2 solenoid valves 24V for Double Acting Actuators | E |

11

| COMMUNICATION SYSTEM | Code |
|--|----------|
| No components | A |
| AS-i card (with 360 Led) | E |
| Traditional 360 led standard wired circuit board | F |

12

| AIR INLET CONNECTIONS | Code |
|------------------------|----------|
| European 6mm Polytube | A |
| American 1/4" Polytube | B |

13

| SOLENOID BRAND | Code |
|----------------|----------|
| Burkert | A |
| SMC | B |

14

| | |
|-----------------|--------------|
| Out of standard | A---Z |
|-----------------|--------------|

[Click here for list of special features](#)

SIGHT GLASSES

Part number composition:

| VALVE MODEL | | | | CONNECTIONS | | VALVE SIZE O.D. | | | STEEL GRADE | | SEAL MATERIAL | | NON STANDARD |
|-------------------|---|---|---|-------------|---|-----------------|---|---|-------------|----|---------------|----|--------------------------|
| 1 | 2 | 3 | 4 | 5 | 6 | 7 | 8 | 9 | 10 | 11 | 12 | 13 | 14 |
| Q | R | D | 6 | 5 | 0 | 2 | 0 | 0 | B | B | A | E | - |
| QRD sight glasses | | | | Weld Ends | | DN2" | | | A316L | | EPDM | | (Example) SPECIFICATIONS |

1 2 3 4

| VALVE MODEL | Code |
|-------------------|-------------|
| QRD Sight Glasses | QRD6 |

10 11

| STAINLESS STEEL GRADE | Code |
|-----------------------|-----------|
| AISI316L | BB |

Other Stainless Steel grades available upon request

5 6 [Link to catalogue](#)
Click: [QRD Catalogue](#)

| HOUSING CONNECTIONS | Code |
|---------------------|-----------|
| weld ends INCHES | 50 |
| male SMS | 60 |
| male BS(RJT) | 65 |
| male IDF | 70 |
| Tri-Clamp | 75 |

12 13

| SEAL MATERIAL (product contact) | Code |
|---------------------------------|-----------|
| EPDM | AE |
| HNBR | AH |
| PTFE | AP |
| SILICON | AS |
| FKM | AV |

7 8 9

| VALVE SIZE O.D. | Code |
|-----------------|------------|
| 1/4" | 014 |
| 1/2" | 012 |
| 3/4" | 034 |
| 1" | 100 |
| 1"1/2 | 112 |
| 1"1/4 | 114 |
| 2" | 200 |
| 2"1/2 | 212 |
| 3" | 300 |
| 4" | 400 |

For mixed sizes body or different O.D. please [contact us](#).

14

| Out of standard | A---Z |
|-----------------|-------|
| | |

[Click here for list of special features](#)

Out of standard executions

Have a unique application?

Bardiani can provide many custom valve solutions beyond our standard offerings.

This can include:

- Valve body combinations different from catalogue.
- Special O.D.s
- Stainless steel heating jackets.
- Special housing connections.
- Valve bodies with mixed sizing.
- Different stainless steel grades.
- Special compound for seals.
- Actuator model different from standard.
- Smoother surface finishing for internal surfaces.
- Electro polishing for parts in contact with product.
- Stroke limiters.
- Air pressure regulators and manometers.
- Special shaft profiles.
- Hydraulic damper.
- Electro positioner for special applications (i.e. butterfly valves, high pressure valves, etc).
- External proximities (not fitted into Giotto Top).

... and many other possible tailor made solutions.

Recommendations

- 1.** Consultation of the "Instruction, Use and Maintenance Manual" is mandatory prior to the installation, use and maintenance of the products of all Products. All the information, indications, specifications, technical details provided herein are based on test data which the Manufacturer Bardiani Valvole S.p.A. or its Distributors holds to be reliable nevertheless the above is not deemed to be assumed as fully exhaustive inasmuch as not every possible use has been envisaged.
- 2.** All the illustrations and drawings provided are to be intended as indicative and therefore not binding, the illustrations being for presentation purposes only.
- 3.** It is the Buyer's duty to assess the suitability of the products for the use he intends to make of the same prior to placing the order as he/she will take the risks and accept liability in case of incorrect choice and use of the Products.
- 4.** The Manufacturer strongly recommends the Buyer to contact their sales team and request any information that might be needed in relation to the specifications and uses of the Products.
- 5.** The information provided in this manual refers to the standard products manufactured by Bardiani Valvole S.p.A. and therefore cannot be assumed to apply to customized products as well.
- 6.** Bardiani Valvole S.p.A. or its Distributors reserves the right to amend and/or integrate and/or update the data and/or information and/or technical details relative to Products at any time and without prior notice. Please visit the website www.bardiani.com, where the latest updated of the "Instruction, Use and Maintenance Manual" can be found".
- 7.** The content and validity of the warranty covering the Products of Bardiani Valvole S.p.A are dealt with in the relevant section in the "Instruction, Use and Maintenance Manual" which constitutes an integral part of the Products themselves.
- 8.** Bardiani Valvole S.p.A. or its Distributors, shall not in any way be held liable for immaterial, indirect and consequential damages, such as (by way of example only), damages or loss of business, contracts, opportunities, time, production, profits, goodwill, image etc..



Bardiani Valves Canada Ltd.

71 Pelham Avenue
Toronto, ON M6N 1A5
Canada

Ph: +1 416 653 5654

sales@bardiani-valves.ca
www.bardiani.com