

DIALOG A 96 x 24 DIALOG A 144 x 36 Light-Strip Indicators

Quasi-Analog Panel Meters
with Digital Display
and Limit Values



DINALOG ^{96 x 24}_{144 x 36}

Applications

These measuring instruments are suitable for all applications which require simultaneous monitoring of several measured values.

The highly legible display provides the user with a plain overview of important measured values at a single glance, even where adverse lighting conditions prevail.

Each instrument can be ideally configured for the desired measuring task through the use of various measuring modules.

The high contrast LED display makes these measuring instruments an attractive alternative to conventional analog or light-strip indicators with LCD.

Your Advantages:

- All measured values at a single glance
- Precise values can be read from the additional digital display
- High-contrast LED display
- Good legibility, even from unfavorable visual angles
- Power supply is electrically isolated from the measuring circuit
- IP 65 protection at front panel
- Minimal installation depth of less than 127 mm
- Quick installation thanks to mounting tabs, suitable for all panel thicknesses
- Pre-wiring is made possible with detachable screw terminal blocks

DINALOG A 96 x 24

Single Display Indicator

This measuring instrument is always laid out as a single display device with one light-strip indicator and an additional digital display.

Models with two limit values are available for direct current and direct voltage measuring ranges.

The limit values are displayed along with the measured value at the light-strip.

Limit value violation messages are read out via relay contacts at the rear panel, and are displayed at the scale with LEDs as well.

The 36 segment LED light-strip indicator displays measured values at a 45 mm scale with 3% resolution.

The full display range can also be taken advantage of for bipolar measurements thanks to the additional polarity display.

Easy programming with three keys allows for on-site display range adjustments.



New Light-Strip Indicators – Quick, Accurate Measured Value Monitoring!

DIALOG A 144 x 36

Single Display Indicator

The current measured value is simultaneously read out to the light-strip indicator, and to the digital display.

Selected limit values can be plainly displayed next to the measured value at a second light-strip for models including limit values.

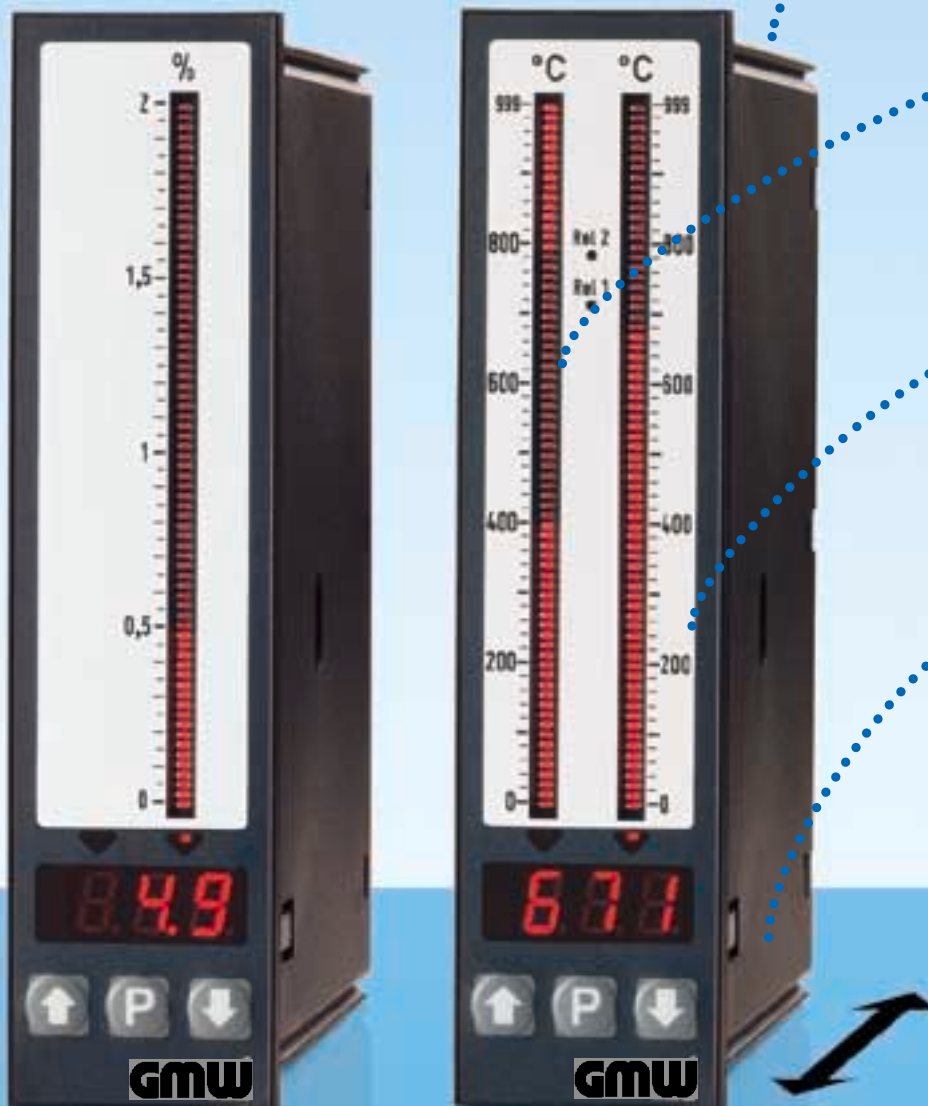
The user is thus provided with an ideal overview of the margin between the measured value and the limit values.

Double Display Indicator

Current measured values are displayed at two light-strips arranged next to one another.

Either one of these values can be simultaneously read out to the digital display as well.

An LED at the bottom of the respective light-strip scale indicates which of the two values is currently being read out to the digital display.



Quick Installation

Installation is easy, quick and reliable with the included mounting tabs.

71 Segment Display

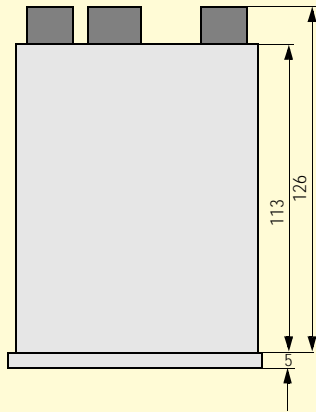
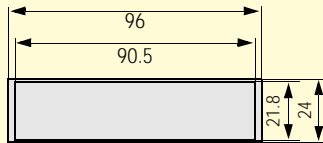
The measured value is displayed at a 91 mm scale with an accuracy level which exceeds class 1.5.

Alarm Messages

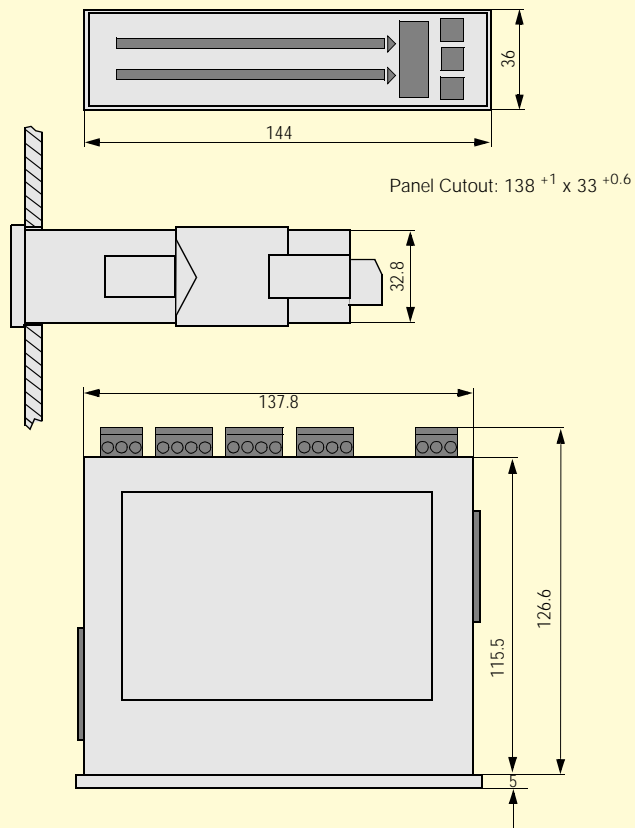
Limit value violations are indicated at the scale with additional LEDs.

A minimal installation depth of less than 127 mm allows for mounting to practically any control cabinet.

DINALOG A 96 x 24



DINALOG A 144 x 36



All dimensions in mm

Characteristic Values, DINALOG A 96 x 24 and DINALOG A 144 x 36

<ul style="list-style-type: none"> • Variants • Single display indicator • Limit monitor with up to 4 limit values • Single display indicator with slave pointer function • Double display indicator • Display • Type: red LED • Analog <ul style="list-style-type: none"> DINALOG A 144 x 36: 71 segments DINALOG A 96 x 24: 36 segments • Digital <ul style="list-style-type: none"> 3 digits 7 segment display with polarity indicator • Character Height approx. 8 mm 	<ul style="list-style-type: none"> • Scale • Format portrait or landscape (no digital display with landscape format) • Scale Color swan white • Scale Length <ul style="list-style-type: none"> DINALOG A 144 x 36: 91 mm DINALOG A 96 x 24: 45 mm • Measuring Ranges • Direct Voltage: 0 ... 2 V to 0 ... 300 V and ± 2 V to ± 300 V • Direct Current: 0 ... 4 ... 20 mA 0 ... 0.2 mA to 0 ... 200 mA and ± 0.2 mA to ± 200 mA • Alternating Voltage: 0 ... 0.2 V to 0 ... 300 V and 0 ... 700 V • Alternating Current: 0 ... 2 mA to 0 ... 200 mA and 0 ... 1 A, 0 ... 5 A • Temperature via Pt100 or • Thermocouple types J, K, R and S • Resistance from 200 Ω to 20 kΩ 	<ul style="list-style-type: none"> • Power Supply • 230 V / 115 V AC or 90 ... 260 V DC or 24 V AC or 18 ... 36 V DC • Outputs, Included with Limit Monitors • 2 Relays each with changeover contact • 2 Additional Relays each with normally open contact • Switching Capacity 5 A / 250 V AC, 5 A / 30 V DC • Switching Time max. 200 ms
---	--	---

Printed in Germany •

GOSSEN Mueller & Weigert
 Kleinreuther Weg 88
 D – 90408 Nuremberg
 Telefon +49 911 3502-0
 Telefax +49 911 3502-307/305
 e-mail: info@g-mw.de
 http://www.g-mw.de

